

BRAYTON

PAUL BRAYTON DESIGNS

BRAYTON
PAUL BRAYTON DESIGNS

WOVEN

Anchor.....	2-3
Aquaclean® Duoro, Ebro, Garonne, Mino, Sil, Tagus.....	4-7
Cameron & Walden	8-9
Estate Tweed.....	10-11
Fuse.....	12-13
Jilly Twill.....	14-15
Killian.....	16-17
Nimbus	18-19
Pebble.....	20-21
Plaid Perfect	22-23
Rhyme.....	24-25
Tally	26-27
Tulip.....	28-29
Woodland.....	30-31

ALMOST®

About Almost®.....	32
Custom Color Emboss.....	33
Almost®.....	34-35
Almost® Asheville.....	36-37
Almost® Avante	38-39
Almost® Barcelona,.....	40-41
Almost® Cambridge, Almost® Icon	

Almost® Buffed,.....	42-43
Almost® Glove,	
Almost® Calf.....	44-45
Almost® Classic,.....	46-47
Almost® Matte	
Almost® Nappa	48-49
Almost® Pearl,.....	50-51
Almost® Vogue, Almost® Ostrich	
Almost® Suede.....	52-53
Almost® Textura	54-55

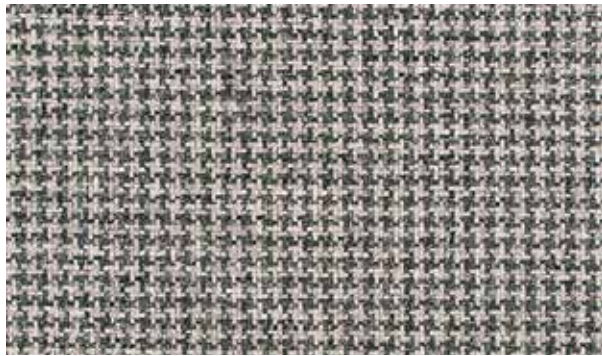
NON-WOVEN

Boho.....	56-57
Ginseng	58-59
Harmony.....	60-61
Tolstoy II.....	62-63
Ultrafabrics®.....	64-65
UF Select Harbor, UF Select Bayside	
Viva.....	66-67

Leather

Copenhagen.....	68-69
-----------------	-------

Anchor



AC01 Puget Sound



AC02 Pike Place



AC03 Golden Garden



AC04 Cannon Beach



AC05 Trek



AC06 Coffee Bean



AC07 Green Lake



AC08 Cascades



AC09 Olympia



AC10 Seattle



AC11 Carbon River



AC12 Harbor Island



AC13 Silver Lake



AC14 Crystal Falls

BLEACH CLEANABLE	TOTAL LIQUID BARRIER	ECO-CONSCIOUS
------------------	----------------------	---------------

Anchor



CONTENT:	91% Polyester / 7% Polyurethane / 2% Silicone
FINISH:	SUPREEN™ Liquid Barrier
BACKING:	Polyurethane
WIDTH: 54"	REPEAT: None
PATTERN DIRECTION:	Shown up the roll
APPLICATION:	Heavy Duty Upholstery
DURABILITY:	100,000 + Double Rubs ASTM D 4157-13 Wyzenbeek
FLAMMABILITY CLASS:	1. California Technical Bulletin 117 : 2013 2. UFAC Class 1. 3. NFPA 260
CLEANING CODE:	S/W, Spot clean with upholstery shampoo, foam from a mild detergent, or a mild dry cleaning solvent. Do not saturate with liquid. Pile fabrics may require brushing to restore appearance. Cushion covers should not be removed and dry cleaned. Bleach Cleanable: 1:10 bleach to water solution.
ECO-FEATURES:	This product does not pose any exposure risks associated with the chemicals in PROP 65. No added flame-retardant chemicals - AB2998 Compliant. No added Anti-bacterial / Anti-microbial chemicals. Lead / Heavy Metal Free BPA free / TRIS free / Formaldehyde Free Does not contain conflict minerals.

Healthier Hospital Compliant - Disclaimer: This product meets the Healthy Interior goals of the Safer Chemical Challenge according to the manufacturer Practice Greenhealth does not verify this information.



AQUA COLLECTION

Fabrics you can clean with just water

aquaclean[®]
fabrics for living



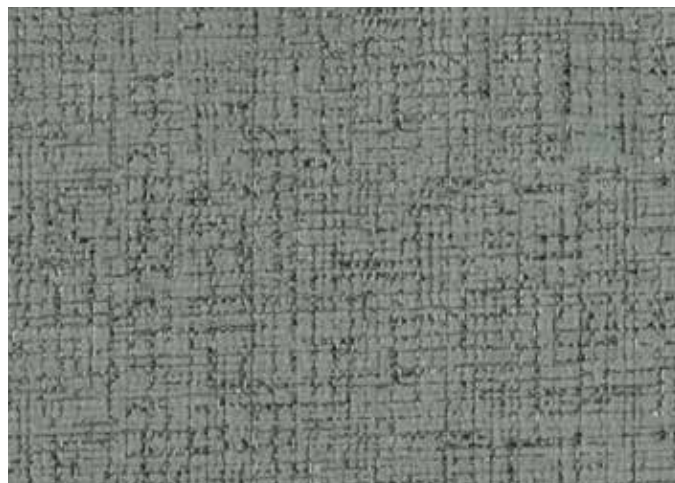
DUORO DU347 Azul



MINO MN395 Anil



SIL SL53 Oceano



TAGUS TG165 Rocas



EBRO EB395 Mar



GARONNE GA321 Lago

BRAYTON
PAUL BRAYTON DESIGNS

AQUA COLLECTION Fabrics you can clean with just water

aquaclean[®]
fabrics for living



DUORO

CONTENT: 100% Recycled Polyester
GRADE: 2
WEIGHT: 14.570 OZ/LY
REPEAT: 12.75"V x 13.97"H



EBRO

CONTENT: 100% Polyester
GRADE: 2
WEIGHT: 15.897 OZ/LY
REPEAT: 4.4"V x 13.97"H



GARONNE

CONTENT: 88% Polyester,
7% Viscose, 5% Acrylic
WEIGHT: 14.806 OZ/LY
GRADE: 2



MINO

CONTENT: 86% Polyester,
12% Recycled Cotton,
2% Others
WEIGHT: 13.655 OZ/LY
GRADE: 1



SIL

CONTENT: 68% Recycled Polyester,
28% Polyester,
4% Polyamide
WEIGHT: 12.653 OZ/LY
GRADE: 1



TAGUS

CONTENT: 75% Polyester,
10% Recycled Cotton,
8% Acrylic, 7% Polyamide
WEIGHT: 14.068 OZ/LY
GRADE: 1

FINISH: Aquaclean

BACKING: None

COUNTRY OF ORIGIN: Spain

WIDTH: 55" **PATTERN DIRECTION:** Shown up the roll

APPLICATION: Indoor

DURABILITY: 100,000 Double Rubs - Wyzenbeek

FLAMMABILITY NOTES: FR Free

CLEANING CODE: W

BREAKING STRENGTH: ASTM D 5034-21 - Pass

CAL 117 2013: Pass

ENVIRO BENEFITS: PFAS Free, No added flame retardant chemicals, mildew resistant, no added antibacterial / anti-microbial chemicals, lead free, heavy metal free, formaldehyde free, BPA free

ACT SYMBOLS: 

*Abrasion test results exceeding ACT Performance Guidelines are not an indicator of product lifespan. Multiple factors affect fabric durability and appearance retention. **ACT Registered Certification Mark

aquaclean[®]
fabrics for living

WATER CLEANING IN THREE SIMPLE STEPS

- 1** Remove any excess residue from your upholstery.
- 2** Apply water* over the stain, either directly or using a damp cloth, then wait a few seconds.
- 3** Finally, press down with the damp cloth and rub gently over the fabric in circular movements. If the stain does not come off completely (especially dried in stains) repeat the process as required.

*To avoid potential limescale stains, it is preferable to use bottled water.



Scan for comprehensive Aquaclean maintenance and water cleaning instructions.



Thanks to SafeFront[®] technology, our fabrics are protected against viruses and bacteria. They have been proven to reduce viral activity by over 91% after two hours of continuous contact.



AQUA COLLECTION Fabrics you can clean with just water

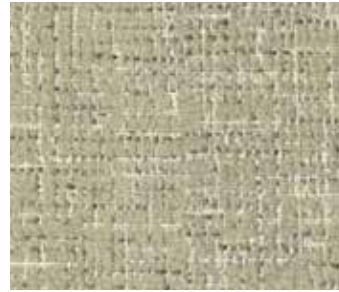
aquaclean^o
fabrics for living



TAGUS TG76 Coco



SIL SL151 Leche



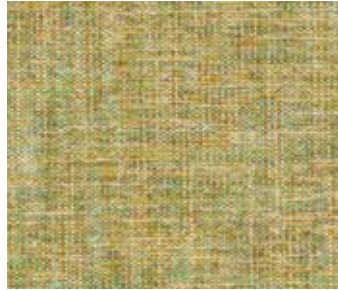
TAGUS TG139 Azucar



DUORO DU90 Papel



EBRO EB32 Plomo



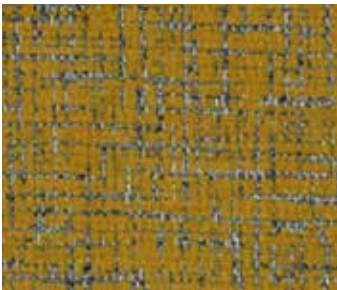
GARONNE GA314 Sol



MINO MN314 Maiz



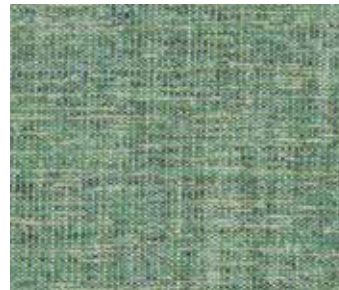
EBRO EB314 Amarillo



TAGUS TG420 Mostaza



DUORO DU357 Dorado



GARONNE GA323 Pasto



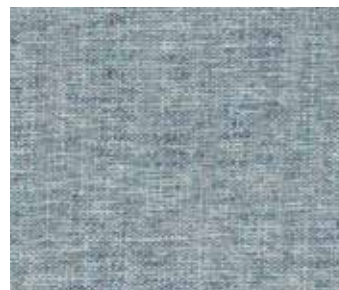
DUORO DU407 Arbol



SIL SL407 Oliva



EBRO EB395 Mar



GARONNE GA321 Lago



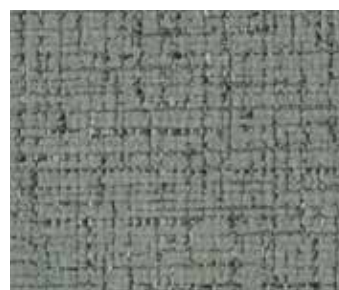
DUORO DU347 Azul



SIL SL53 Oceano



TAGUS TG78 Cielo



TAGUS TG165 Rocas



MINO MN395 Anil



GARONNE GA14 Noche



EBRO EB324 Rosado



MINO MN34 Violeta



DUORO DU30 Ceresa



GARONNE GA30 Uvas



MINO MN305 Melon



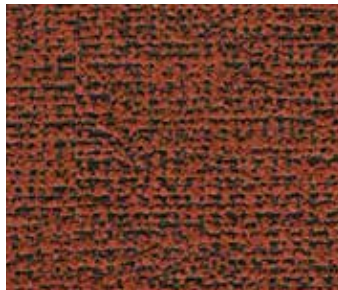
EBRO EB305 Salmon



MINO MN28 Rojo



TAGUS TG80 Vino



SIL SL30 Rosas



DUORO DU302 Morado



TAGUS TG72 Marron



DUORO DU27 Madera



SIL SL11 Tierra



TAGUS TG164 Cafe



GARONNE GA13 Canosa



MINO MN1300 Plateado



SIL SL271 Gris



TAGUS TG77 Piedra



TAGUS TG110 Plata

Cameron



Walden



CM01 Harbor



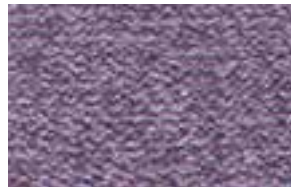
WL01 Beach



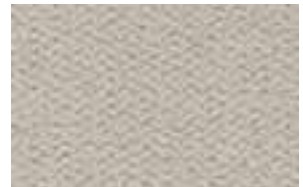
CM02 Jetty



CM03 Fog



WL02 Dragonfly



WL03 Sandy Swan



CM04 Blue Lake



CM05 Aquatic



WL04 Lily Pad



WL05 Inlet



CM06 Starboard



CM07 Marina



WL06 Marsh



WL07 Gravel Path



CM08 Copper Keel



CM09 Wake



WL08 Misty



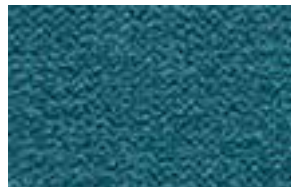
WL09 Silver Cove



CM10 Port



CM11 Pontoon



WL10 Drift



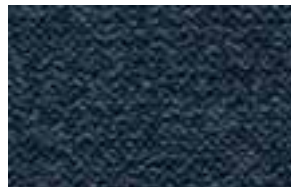
WL11 Anchor Slate



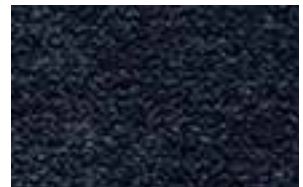
CM12 Deck



CM13 Mast



WL12 Breezy



WL13 Coast

Cameron & Walden

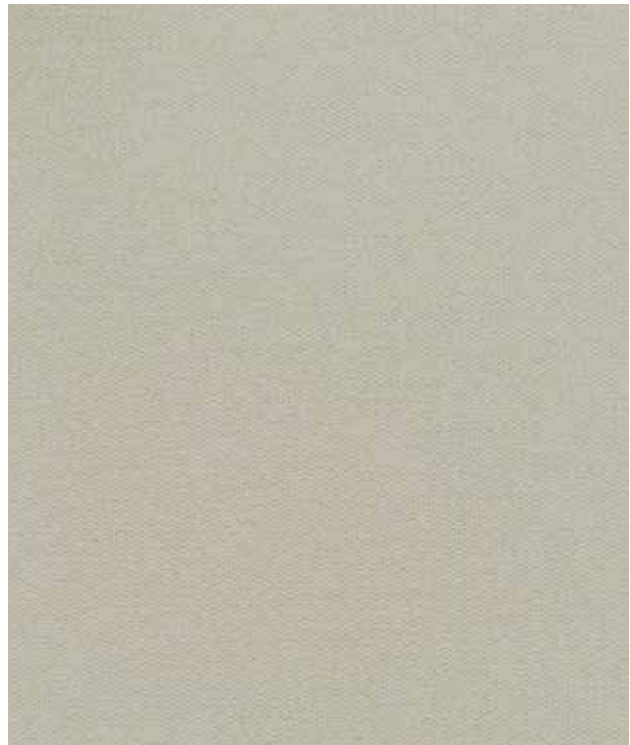


CONTENT (CAMERON):	94% Polyester / 4% Polyurethane / 2% Silicone
CONTENT (WALDEN):	89% Polyester / 9% Polyurethane / 2% Silicone
FINISH:	SUPREEN™ Stain Repellent
BACKING:	SUPREEN™ Liquid Barrier
WIDTH: 54"	REPEAT: None
PATTERN DIRECTION:	Shown up the roll
APPLICATION:	Heavy Duty Upholstery
DURABILITY:	100,000 + Double Rubs ASTM D 4157-13 Wyzenbeek
FLAMMABILITY CLASS:	1. California Technical Bulletin 117 : 2013 2. UFAC Class 1 3. NFPA
CLEANING CODE:	S/W, Spot clean with upholstery shampoo, foam from a mild detergent, or a mild dry cleaning solvent. Do not saturate with liquid. Pile fabrics may require brushing to rest should not be removed and dry cleaned. Bleach Cleanable: 1:10 bleach to water solution
ECO-FEATURES:	This product does not pose any exposure risks associated with the chemicals in PROP 65. No added flame-retardant chemicals – AB2998 Compliant. No added Anti-bacterial / Anti-microbial chemicals. Lead / Heavy Metal Free BPA free / TRIS free / Formaldehyde Free Does not contain conflict minerals.

Cameron



Walden



Estate Tweed



ET-01 Fleming



ET-02 Paterson



ET-03 Stewart



ET-04 Crawford



ET-05 Malcolm



ET-06 Douglas



ET-07 Fletcher



ET-08 Gordon



ET-09 Brodie



ET-10 Mitchell



ET-11 Murray

Estate Tweed

Content:

63% Polyester; 37% Acrylic

Grade: 1

Width:

54"

Weight:

17.60 oz / LY

Country Of Origin:

USA

Standard Backing:

Latex Acrylic

Pattern Direction:

Railroaded

Abrasion:

75,000 double rubs, Wyzenbeek*

Cleaning Code:

WS

AATC-8 / Crocking:

Pass

NFPA 260 (UFAC):

Pass

Cal 117 2013:

Pass

ACT Symbols:

**Abrasion test results exceeding ACT Performance Guidelines are not an indicator of product lifespan. Multiple factors affect fabric durability and appearance retention.*

***ACT® Registered Certification Marks*



Fuse



FS01 Chicago



FS02 Savanna



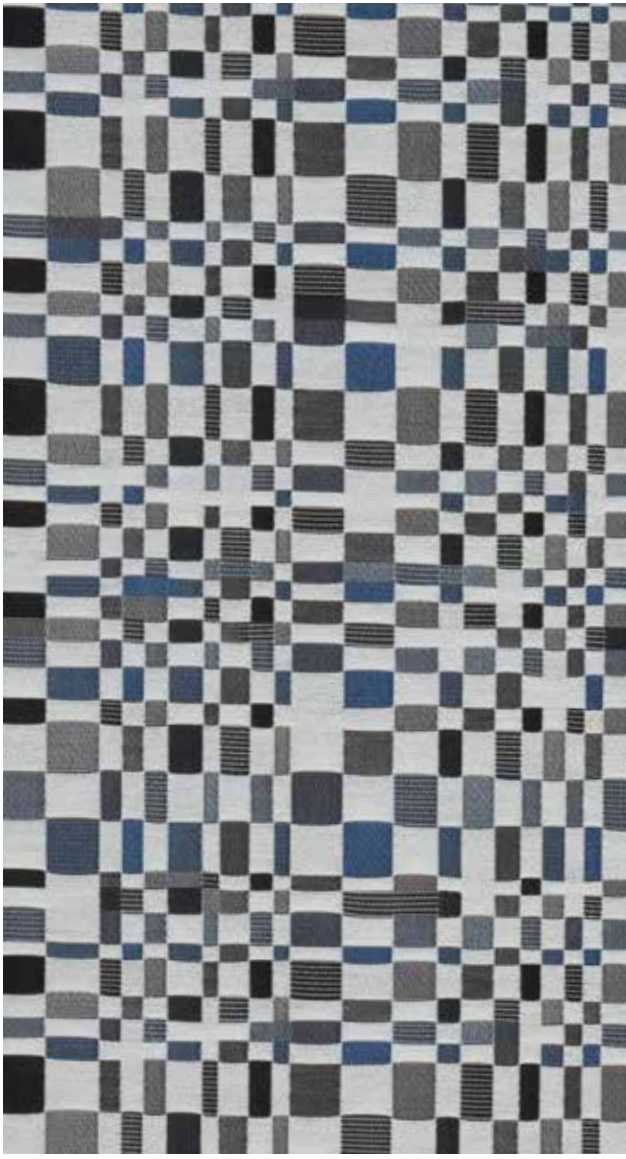
FS03 Phoenix



FS04 Charlotte



FS05 Portland



FS06 Philadelphia

Fuse

Content:

36% Acrylic, 34% Post Consumer Polyester, 30% Nylon

Finish:

Defend Free water repellent

Backing: None

Grade: 4

Width:

54"

Weight:

16.78 oz / LY

Country Of Origin:

USA

Repeat:

9.5" V x 9.625" H

Pattern Direction:

Up the Roll

Abrasion:

100,000 double rubs, Wyzenbeek*

Cleaning Code:

WSB

Bleach Cleanable:

10:1 Water:Bleach

Breaking Strength:

ASTM-D5034-21
Pass

Cal 117 2013:

Pass

Environmental Benefits:

PFAS Free, No added Flame Retardant chemicals, No added anti-bacterial / anti-microbial chemicals, Lead free, Heavy metal free, Formaldehyde free, BPA free

Certificates & Standards:

Healthier Hospitals Compliant

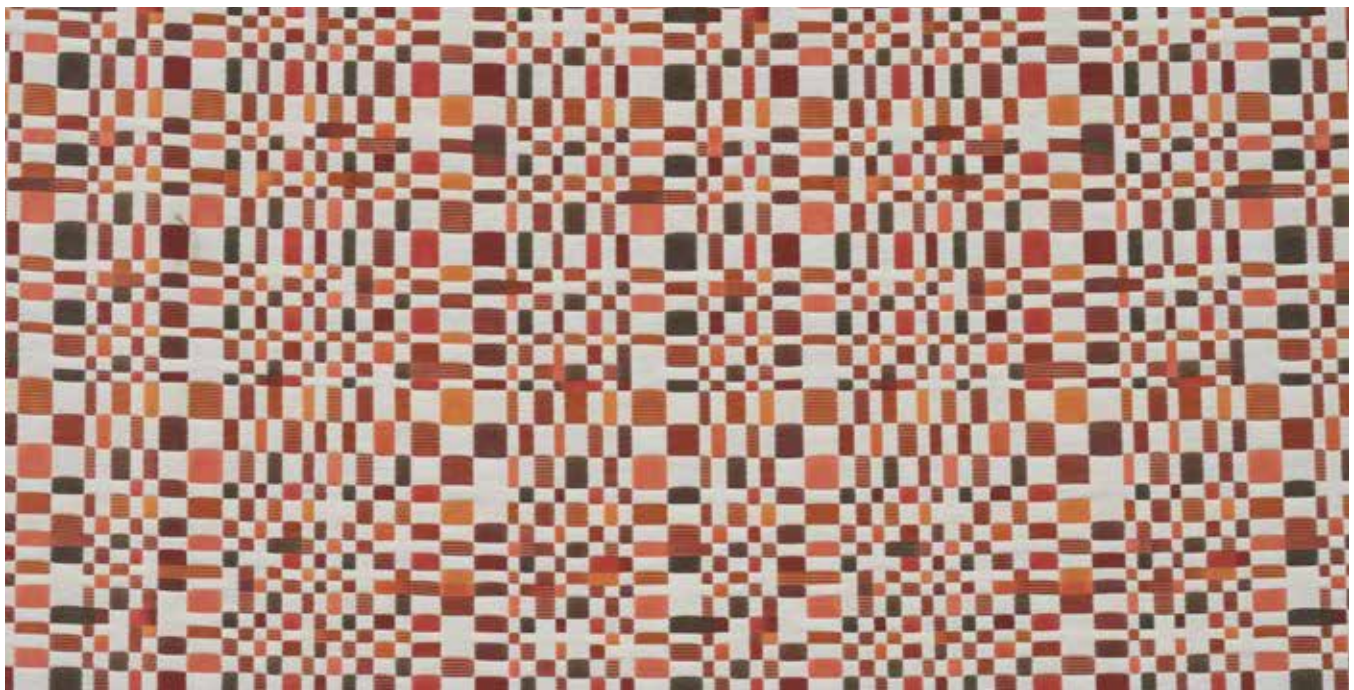
Flammability Notes:

FR Free

ACT Symbols:

**Abrasion test results exceeding ACT Performance Guidelines are not an indicator of product lifespan. Multiple factors affect fabric durability and appearance retention.*

***ACT® Registered Certification Marks*



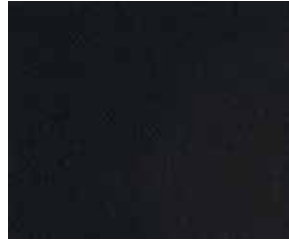
Jilly Twill



Grape JT01



Pea Pod JT03



Black JT04



Silver Birch JT05



Bluebird JT06



Alpine JT08



Dill JT10



Laguna JT12



Dark Granite JT15



Medium Gray JT17



Ruby Red JT18



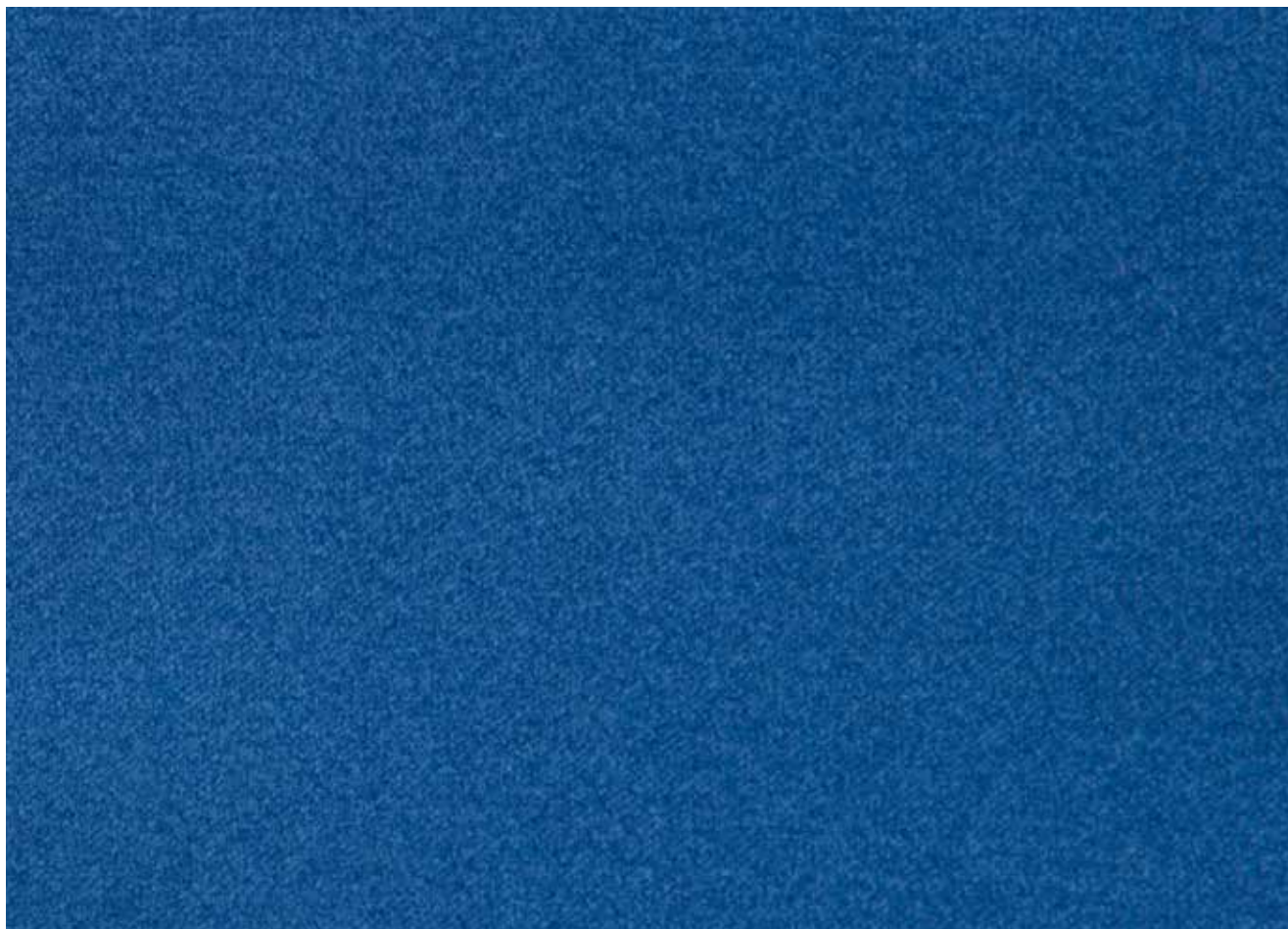
JT20 Bleu



Gray-Taupe JT24

Jilly Twill

DESIGN:	Paul Brayton Designs Exclusive
CONTENT:	100% Polyester
FINISH:	Stain Repellent
BACKING:	Light Acrylic
WIDTH: 54"	REPEAT: None
PATTERN DIRECTION:	Shown up the roll
APPLICATION:	Heavy Duty Upholstery
DURABILITY:	100,000+ Double Rubs – Wyzenbeek / Cotton Duck
FLAMMABILITY CLASS:	1. California Technical Bulletin 117 : 2013
CLEANING CODE:	S – Spot clean using water-free solvent or dry cleaning product. Cleaning by a professional service is recommended.



Killian



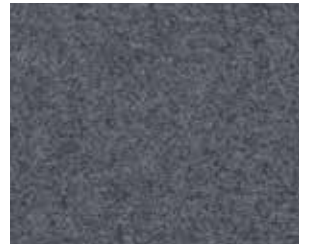
KN13 Light Ash



KN27 Jade



KN23 Honeycomb



KN11 Storm Cloud



KN16 Pear



KN26 Steel Wool



KN28 Blue Topaz



KN01 Sapphire



KN20 Carrot



KN15 Fuschia



KN05 Walnut



KN10 Castlerock



KN14 Autumn



KN09 Blackberry



KN25 Buff

Killian

DESIGN:	Paul Brayton Designs Exclusive
CONTENT:	70% Wool, 20% Polyester, 5% Nylon, 5% Acrylic
WIDTH: 54"	REPEAT: None
PATTERN DIRECTION:	Shown up the roll
APPLICATION:	Heavy Duty Upholstery
DURABILITY:	100,000+ Double Rubs - Martindale
FLAMMABILITY CLASS:	1. California Technical Bulletin 117 : 2013
CLEANING CODE:	S - Spot clean using water-free solvent or dry cleaning product. Cleaning by a professional service is recommended.



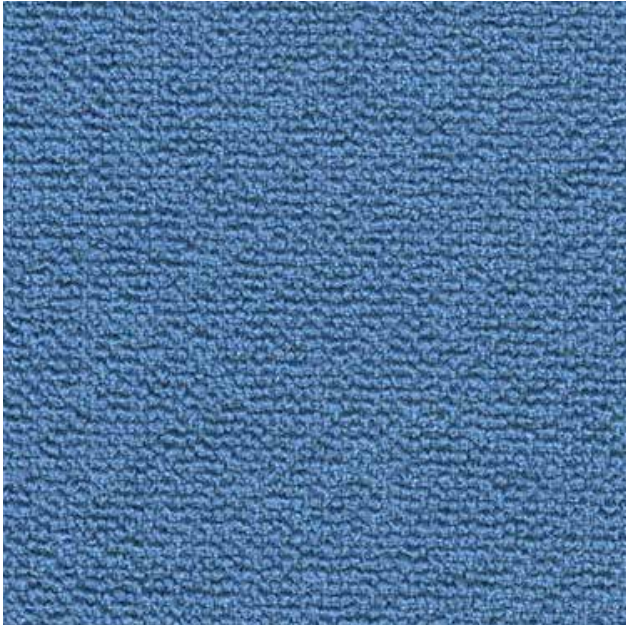
Nimbus



NM-20 Sealskin



NM-21 Lime



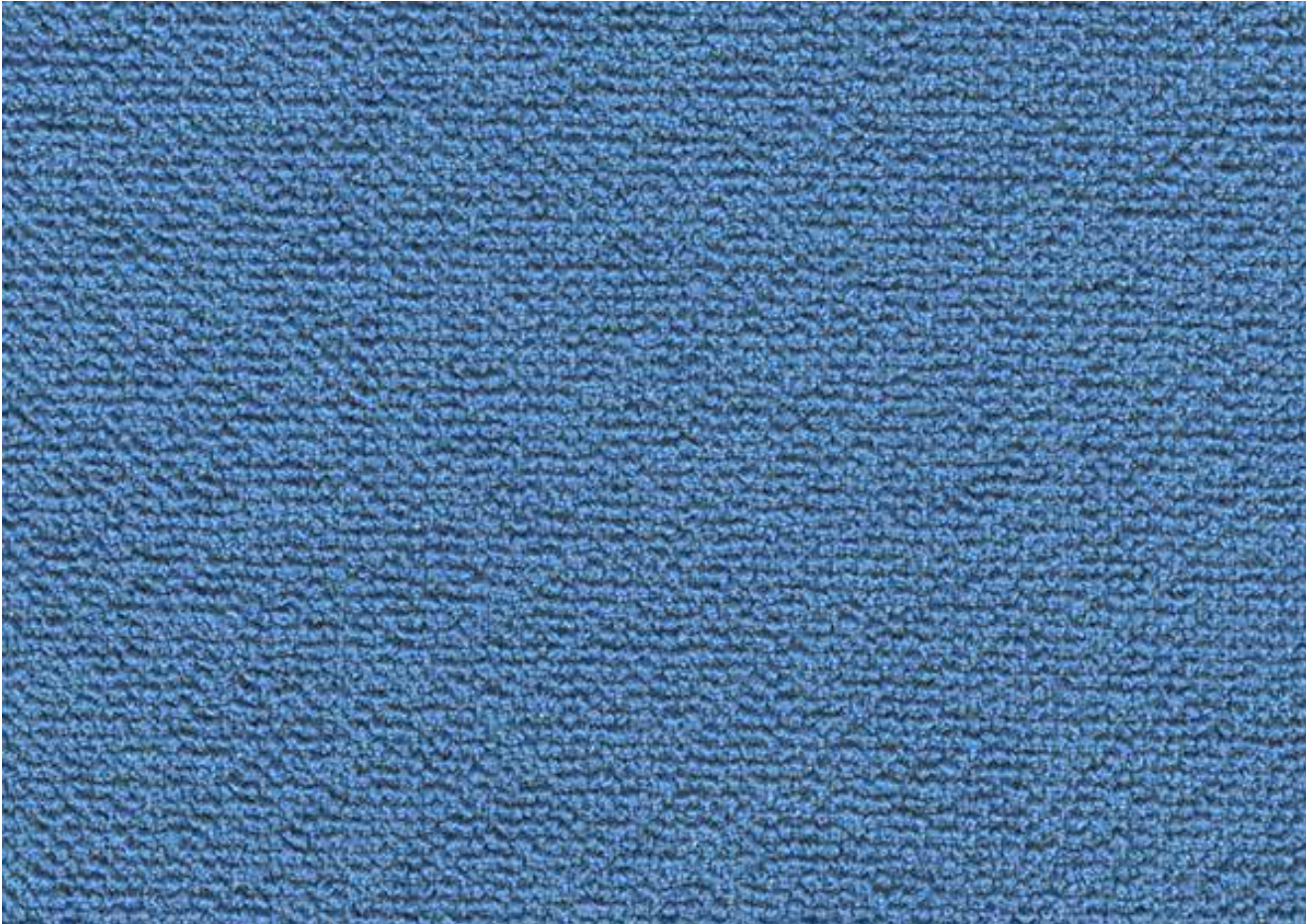
NM-40 Cancun



NM-70 Baroness

Nimbus

CONTENT:	100% Post-Consumer Recycled Polyester
FINISH:	GreenShield with light acrylic backing
WIDTH: 54"	REPEAT: None
PATTERN DIRECTION:	Shown up the roll
APPLICATION:	Heavy Duty Upholstery
DURABILITY:	250,000+ double rubs
FLAMMABILITY CLASSIFICATION:	California Technical Bulletin 117 : 2013
CLEANING CODE:	W / S
ECO-FEATURES:	100% Recycled Content. Eco-Conscious Manufacturing. GreenShield Finish.



Pebble



PE01 Marble



PE02 Shale



PE03 Flint



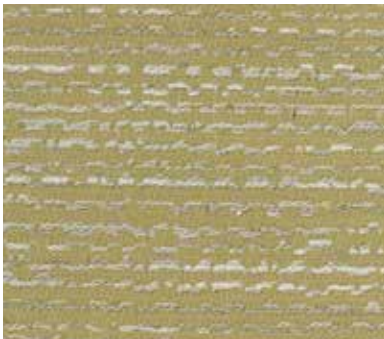
PE04 Granite



PE05 Tiger's Eye



PE06 Sunstone



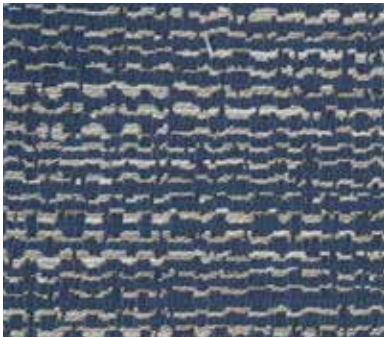
PE07 Green Opal



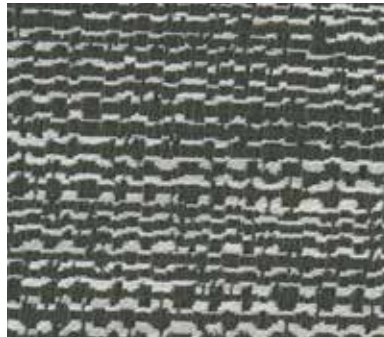
PE08 Topaz



PE11 Sandstone



PE09 Lapis



PE10 Moonstone

Pebble

Content:

73% Post Consumer Polyester,
27% Nylon

Finish:

Defend Free water repellent

Backing: Light Acrylic

Grade: 4

Width:

55"

Weight:

17.89 oz / LY

Country Of Origin:

USA

Repeat:

18.5" V x 9.5" H

Pattern Direction:

Up the Roll

Abrasion:

100,000 double rubs, Wyzenbeek*

Cleaning Code:

WSB

Bleach Cleanable:

10:1 Water:Bleach

Breaking Strength:

ASTM-D5034-21
Pass

Cal 117 2013:

Pass

Environmental Benefits:

PFAS Free, No added Flame Retardant chemicals, No added anti-bacterial / anti-microbial chemicals, Lead free, Heavy metal free, Formaldehyde free, BPA free

Certificates & Standards:

Healthier Hospitals Compliant

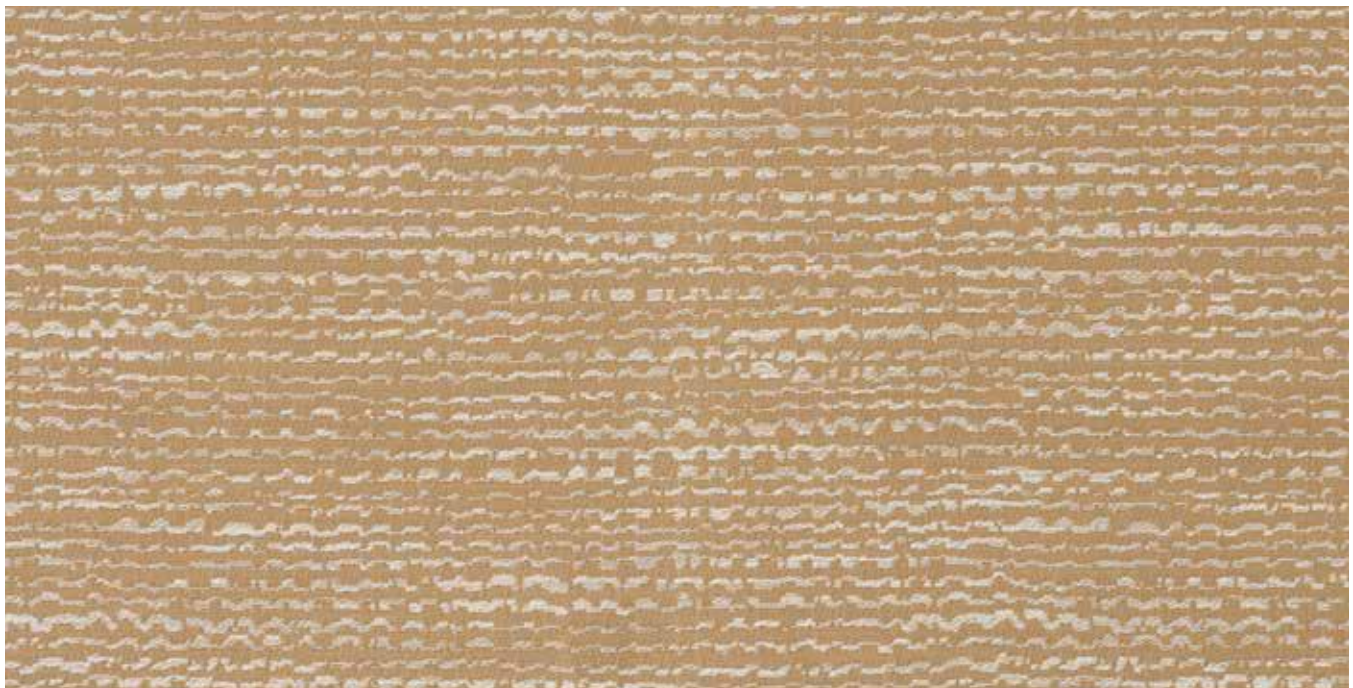
Flammability Notes:

FR Free

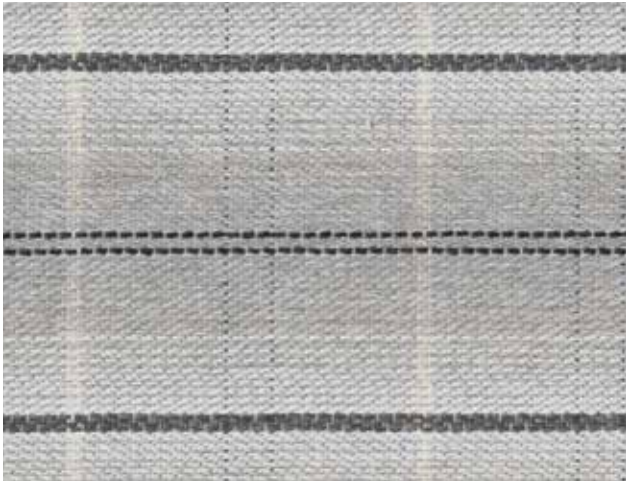
ACT Symbols:

**Abrasion test results exceeding ACT Performance Guidelines are not an indicator of product lifespan. Multiple factors affect fabric durability and appearance retention.*

***ACT® Registered Certification Marks*



Plaid Perfect



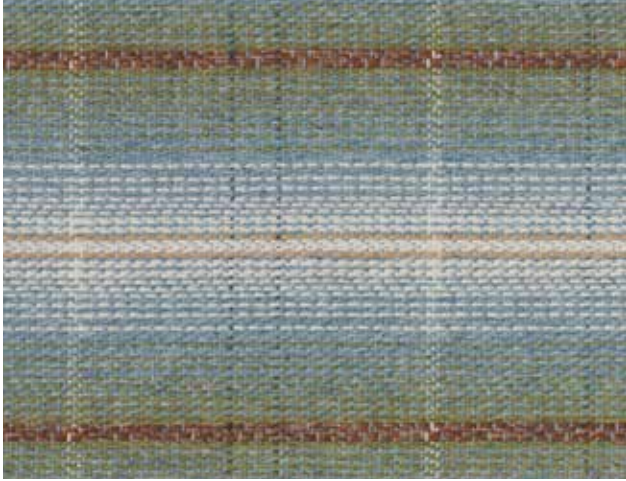
PL01 Granite



PL02 Ivory



PL03 Bisque



PL04 Horizon



PL05 Blue

Plaid Perfect

Content:

77% post consumer polyester,
23% virgin polyester

Finish:

Zero Fluorine Finish

Backing: Latex Acrylic

Grade: 2

Width:

54"

Weight:

14.4 oz / LY

Country Of Origin:

USA

Repeat:

3.6" V x 3.6" H

Pattern Direction:

Railroaded

Abrasion:

66,000 double rubs, Wyzenbeek*

Cleaning Code:

WSB

Bleach Cleanable:

10:1 Water:Bleach

Breaking Strength:

ASTM-D5034-21

Pass

Cal 117 2013:

Pass

Environmental Benefits:

PFAS Free, No added Flame Retardant chemicals, Environmentally friendly made of recycled soda bottles, No added anti-bacterial / anti-microbial chemicals, Lead free, Heavy metal free, Formaldehyde free, BPA free

Certificates & Standards:

Healthier Hospitals Compliant

Flammability Notes:

FR Free

ACT Symbols:

**Abrasion test results exceeding ACT Performance Guidelines are not an indicator of product lifespan. Multiple factors affect fabric durability and appearance retention.*

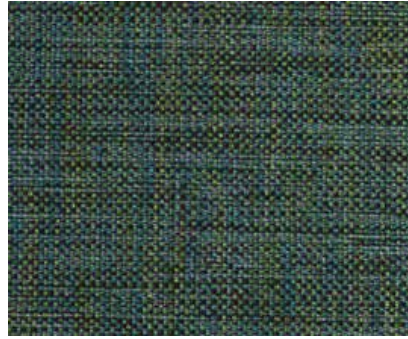
***ACT® Registered Certification Marks*



Rhyme



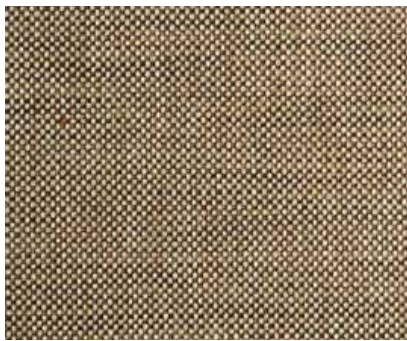
RY-09 Margarita



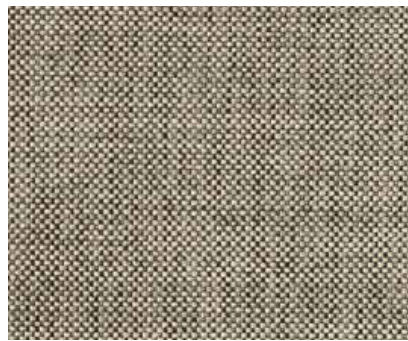
RY-07 Blue Bayou



RY-11 Bell Bottom



RY-01 Castaway



RY-14 Cottage Side



RY-16 Moon Shadow



RY-18 Cajun Kick



RY-02 Wild Wood

Rhyme

CONTENT:	100% Polyester
FINISH:	Resilience TX
BACKING:	Synthetic rubber
WIDTH: 54"	REPEAT: None
PATTERN DIRECTION:	Shown up the roll
APPLICATION:	Heavy Duty Upholstery
DURABILITY:	100,000+ Double Rubs
FLAMMABILITY CLASS:	1. California Technical Bulletin 117 : 2013. 2. NFPA260
CLEANING CODE:	S - spot clean using a water-free solvent or dry cleaning product. Cleaning by a professional service is recommended.



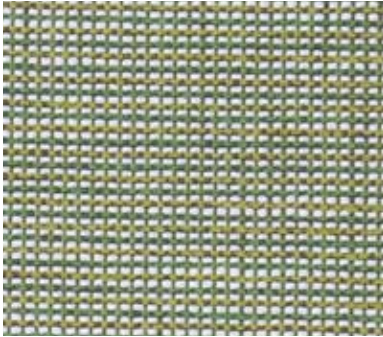
Tally



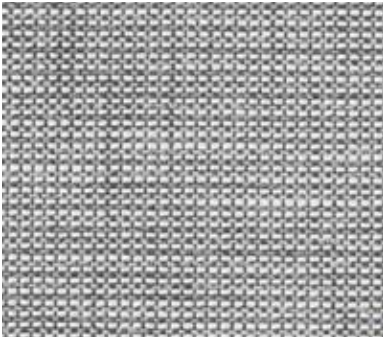
TA01 Harvest



TA02 Dusty



TA03 Pickled



TA04 Aluminum



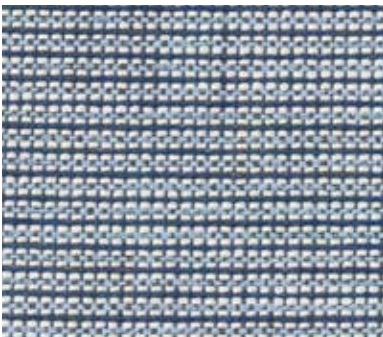
TA05 Autumn



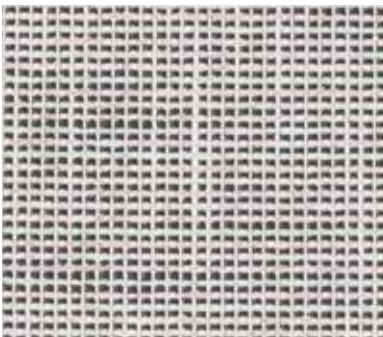
TA06 Sunset



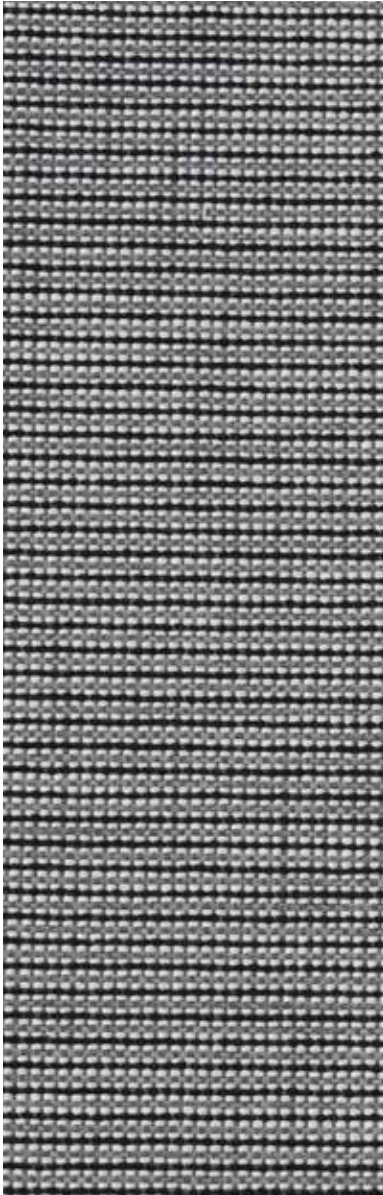
TA07 Summer Haze



TA08 Bungalow Blue



TA09 Glowing



TA10 Chestnut

Tally

Content:

95.04% polyester, 4.96% Olefin

Finish:

Eco Ease water repellent with standard backing

Grade: 3

Width:

55"

Weight:

19.984 oz / LY

Backing:

Light Acrylic

Country Of Origin:

USA

Repeat:

.25" V x 0.125" H

Pattern Direction:

Up the Roll

Abrasion:

100,000 double rubs, Wyzenbeek*

Cleaning Code:

WSB

Bleach Cleanable:

10:1 Water:Bleach

Breaking Strength:

ASTM-D5034-90

Pass

Cal 117 2013:

Pass

Environmental Benefits:

PFAS Free, No added Flame Retardant chemicals, Mildew Resistant, No added anti-bacterial / anti-microbial chemicals, Lead free, Heavy metal free, Formaldehyde free, BPA free

Certificates & Standards:

Greenguard Certified
Healthier Hospitals Compliant

Flammability Notes:

FR Free

ACT Symbols:

**Abrasion test results exceeding ACT Performance Guidelines are not an indicator of product lifespan. Multiple factors affect fabric durability and appearance retention.*

***ACT® Registered Certification Marks*



Tulip



Escape TU-01



Honeybee TU-02



Teal TU-04



Red Hot TU-05

Tulip

DESIGN:	Paul Brayton Designs Exclusive
CONTENT:	74% Polyester (16% Post Consumer) & 26% Nylon
FINISH:	DEFEND® Free water repellent finish (free of fluorochemicals)
BACKING:	Light Acrylic
WIDTH: 54"	REPEAT: 9" V x 9" H
PATTERN DIRECTION:	Shown up the roll
APPLICATION:	Heavy Duty Upholstery
DURABILITY:	100,000+ Double Rubs - Wyzenbeek
FLAMMABILITY CLASS:	California Technical Bulletin 117: 2013. UFAC, Class 1. NFPA-260, Class 1
CLEANING CODE:	W/S



Woodland



WD-01 Frost



WD-03 Sky



WD-02 Mist



WD-04 Gem

Woodland

DESIGN:	Paul Brayton Designs Exclusive
CONTENT:	77% Post Consumer Polyester and 23% Nylon
FINISH:	DEFEND® Free water repellent finish (free of fluorochemicals)
BACKING:	Light Acrylic
WIDTH: 55"	REPEAT: 27.5" H x 27.75" V
PATTERN DIRECTION:	Shown up the roll
APPLICATION:	Heavy Duty Upholstery
DURABILITY:	100,000+ Double Rubs - Wyzenbeek
FLAMMABILITY CLASS:	1. California Technical Bulletin 117 : 2013.
CLEANING CODE:	W/S/BC 4:1 Water to Bleach Solution



ALMOST® is manufactured using 100% microscopic nylon fibers that are entangled, like the fibers in collagen. This construction creates a breathable material that is comfortable in all temperatures, beautiful in appearance and feels natural.

The colors and textures are integrated with heat and pressure, directly into the base structure, creating a surface that will never delaminate. ALMOST® is not made of two layers bonded together, but one single ply. It is also highly resistant to cracking, tearing, puncture and fading.



- Exceeds 250,000 Double Rubs
- 10-year Warranty
- Hydrolysis: 10+ Weeks
- Stain Resistant
- Bleach Cleanable (except Suede)
- Liquid impermeable
- FR Free

CUSTOM COLOR MATCH

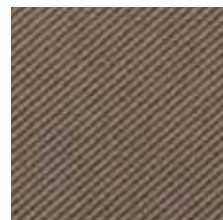
ALMOST® faux leather can be customized to fit any design or aesthetic, making it the perfect choice for your interior design.

Elevate your brand and custom color match any ALMOST pattern to a Pantone number or swatch of your choice.

[CLICK TO GET STARTED](#)

EMBOSS FOR EXTRA EFFECT

Create rich textures and dramatically transform the impact of your interior.



[CLICK TO GET STARTED](#)

All of the ALMOST® products in this binder can be customized.

ALMOST®



AM20 Dover



AM23 Stormy Blue



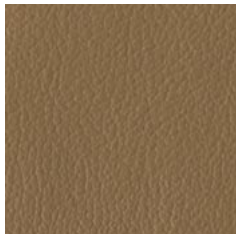
AM24 Iron



AM25 Bayside Blue



AM39 Smoke



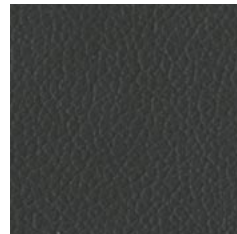
AM141 Honey



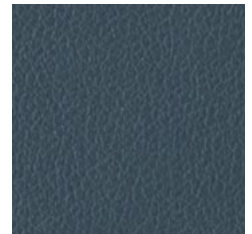
AM46 Putty



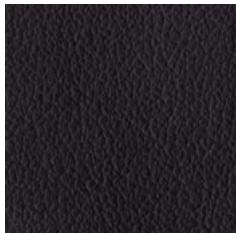
AM47 Mushroom



AM48 Greige



AM52 Bluestone



AM56 Brazil



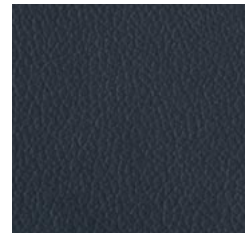
AM80 Cameo



AM81 Oyster Grey



AM83 Taupe



AM87 Indigo



AM89 Jet Black



AM98 Oxford Brown

ALMOST®

Content:
100% Nylon

Grade: 4

Width:
54"

Weight:
10.50 oz / LY

Country Of Origin:
USA

Pattern Direction:
Up the Roll

Abrasion:
250,000 double rubs, Wyzenbeek*

Cleaning Code:
WSB

Bleach Cleanable:
10:1 Water:Bleach

Hydrolysis:
10 Weeks

Breaking Strength:
ASTM-D5034-90

AATC-8 / Crocking:
Pass

NFPA 260 (UFAC):
Pass

Cal 117 2013:
Pass

ASTM E-84: Class A, Adhered
Additional backing required,
contact customer service for
pricing.

Environmental Benefits:
PFAS Free, PVC Free,
Formaldehyde Free, Poly
Fluorinated Compounds Free,
Antimicrobials Antibacterials
Free, Flame Retardant Free,
Phthalate Free

Certificates & Standards:
Healthier Hospitals Compliant

Flammability Notes:
FR Free

ACT Symbols:



Notes:
Additional backing may be
added to meet flame code ASTM
E-84: Class A, Adhered for Panel
and Wallcoverings applications.
Contact Customer Service for
pricing.

**Abrasion test results exceeding ACT
Performance Guidelines are not an
indicator of product lifespan. Multiple
factors affect fabric durability and
appearance retention.*

***ACT® Registered Certification Marks*



ALMOST® Asheville



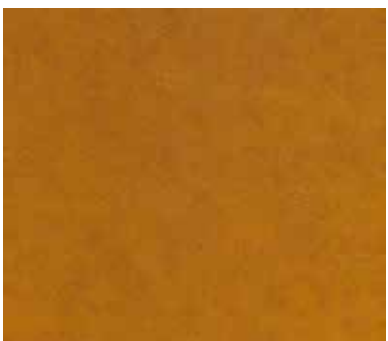
ASV001 Blue Ridge



ASV002 Flaxen



ASV003 Auburn



ASV004 Amber



ASV005 Ashe



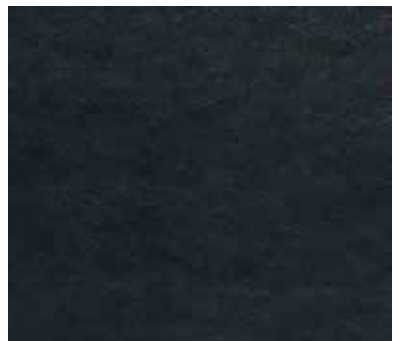
ASV006 Pebble Pathway



ASV007 Mahogany



ASV008 Forest



ASV009 Smoky Mountain

ALMOST® Asheville

Content:
100% Nylon

Grade: 5

Width:
54"

Weight:
13.20 oz / LY

Country Of Origin:
USA

Pattern Direction:
Up the Roll

Abrasion:
250,000 double rubs, Wyzenbeek*

Cleaning Code:
WSB

Bleach Cleanable:
10:1 Water:Bleach

Hydrolysis:
10 Weeks

Breaking Strength:
ASTM-D5034-90

AATC-8 / Crocking:
Pass

NFPA 260 (UFAC):
Pass

Cal 117 2013:
Pass

ASTM E-84: Class A, Adhered
Additional backing required,
contact customer service for
pricing.

Environmental Benefits:
PFAS Free, PVC Free,
Formaldehyde Free, Poly
Fluorinated Compounds Free,
Antimicrobials Antibacterials
Free, Flame Retardant Free,
Phthalate Free

Certificates & Standards:
Healthier Hospitals Compliant

Flammability Notes:
FR Free

ACT Symbols:



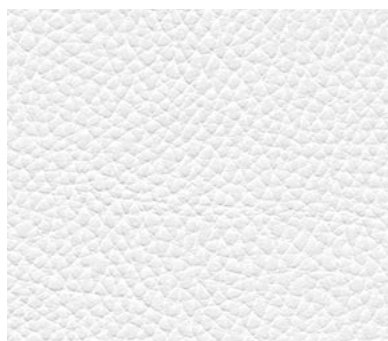
Notes:
Additional backing may be
added to meet flame code ASTM
E-84: Class A, Adhered for Panel
and Wallcoverings applications.
Contact Customer Service for
pricing.

**Abrasion test results exceeding ACT
Performance Guidelines are not an
indicator of product lifespan. Multiple
factors affect fabric durability and
appearance retention.*

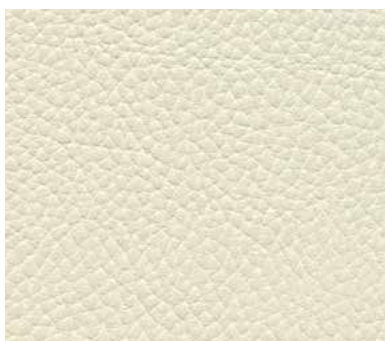
***ACT® Registered Certification Marks*



ALMOST® **Avante**



AAV101 Bright White



AAV102 Cream



AAV103 Atlantic Sand



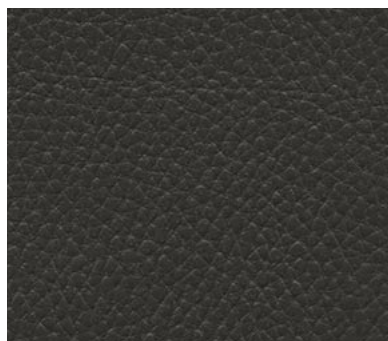
AAV104 Sand Castle



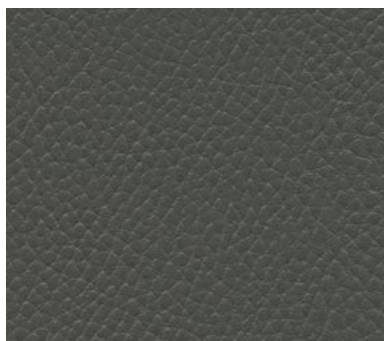
AAV105 Porcini



AAV106 Sorrell



AAV108 Molten Chocolate



AAV109 Elephant



AAV110 Navy Marine



AAV111 Pitch

ALMOST® Avante

Content:
100% Nylon

Grade: 5

Width:
54"

Weight:
10.50 oz / LY

Country Of Origin:
USA

Pattern Direction:
Up the Roll

Abrasion:
250,000 double rubs, Wyzenbeek*

Cleaning Code:
WSB

Bleach Cleanable:
10:1 Water:Bleach

Hydrolysis:
10 Weeks

Breaking Strength:
ASTM-D5034-90

AATC-8 / Crocking:
Pass

NFPA 260 (UFAC):
Pass

Cal 117 2013:
Pass

ASTM E-84: Class A, Adhered
Additional backing required,
contact customer service for
pricing.

Environmental Benefits:
PFAS Free, PVC Free,
Formaldehyde Free, Poly
Fluorinated Compounds Free,
Antimicrobials Antibacterials
Free, Flame Retardant Free,
Phthalate Free

Certificates & Standards:
Healthier Hospitals Compliant

Flammability Notes:
FR Free

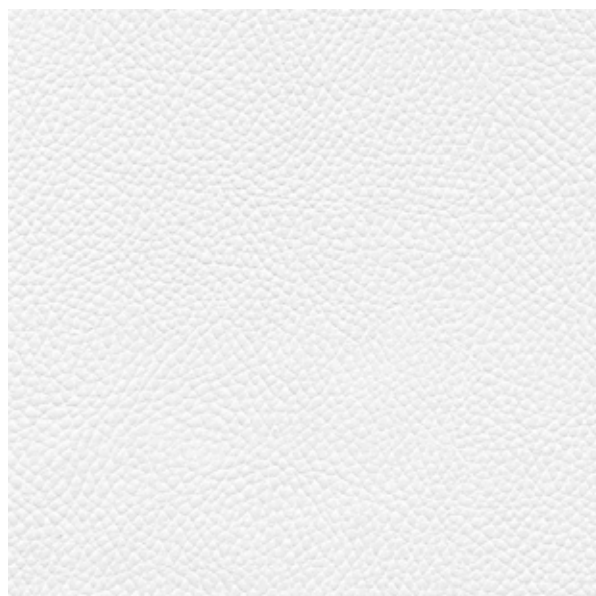
ACT Symbols:



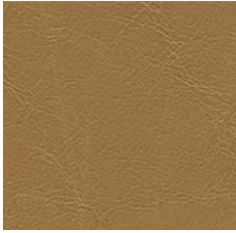
Notes:
Additional backing may be
added to meet flame code ASTM
E-84: Class A, Adhered for Panel
and Wallcoverings applications.
Contact Customer Service for
pricing.

**Abrasion test results exceeding ACT
Performance Guidelines are not an
indicator of product lifespan. Multiple
factors affect fabric durability and
appearance retention.*

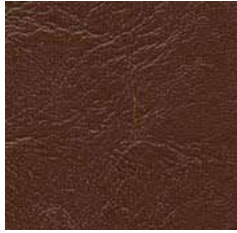
***ACT® Registered Certification Marks*



ALMOST® **Barcelona**



ABR901 Tawny



ABR902 Syrup



ABR903 Port



ABR904 Nearly Black



ABR905 French Roast

ALMOST® **Cambridge**



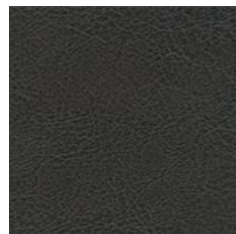
ACM201 Log Cabin



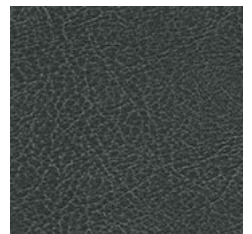
ACM202 Dark Pecan



ACM203 Caramel Nut



ACM204 Extra Dark



ACM206 Cool Iron



ACM207 Warm Grey

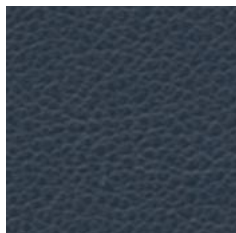
ALMOST® **Icon**



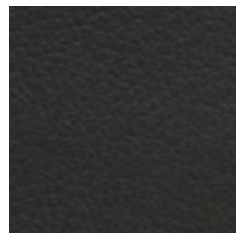
AICN215 Safari



AICN216 Saddle



AICN217 Sapphire



AICN219 Grey

ALMOST[®] Barcelona / Cambridge / Icon

Content:

100% Nylon

Barcelona Grade: 5
Cambridge Grade: 4
Icon Grade: 5

Width:

54"

Weight:

10.50 oz / LY

Country Of Origin:

USA

Pattern Direction:

Up the Roll

Abrasion:

250,000 double rubs, Wyzenbeek*

Cleaning Code:

WSB

Bleach Cleanable:

10:1 Water:Bleach

Hydrolysis:

10 Weeks

Breaking Strength:

ASTM-D5034-90

AATC-8 / Crocking:

Pass

NFPA 260 (UFAC):

Pass

Cal 117 2013:

Pass

ASTM E-84: Class A, Adhered
Additional backing required,
contact customer service for
pricing.

Environmental Benefits:

PFAS Free, PVC Free,
Formaldehyde Free, Poly
Fluorinated Compounds Free,
Antimicrobials Antibacterials
Free, Flame Retardant Free,
Phthalate Free

Certificates & Standards:

Healthier Hospitals Compliant

Flammability Notes:

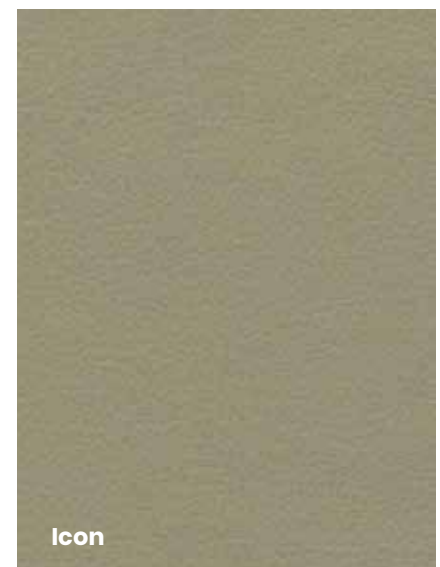
FR Free

ACT Symbols:**Notes:**

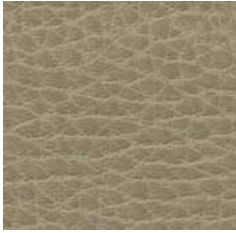
Additional backing may be added to meet flame code ASTM E-84: Class A, Adhered for Panel and Wallcoverings applications. Contact Customer Service for pricing.

**Abrasion test results exceeding ACT Performance Guidelines are not an indicator of product lifespan. Multiple factors affect fabric durability and appearance retention.*

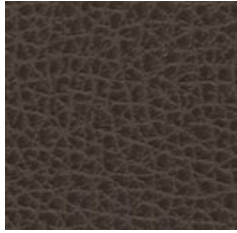
***ACT[®] Registered Certification Marks*



ALMOST® **Buffed**



ABF950 Cafe Creme



ABF951 Cavern



ABF952 Day Lily



ABF953 Twilight

ALMOST® **Glove**



AGV400 Lemon



AGV402 Oatmeal



AGV405 Coral



AGV409 Magenta



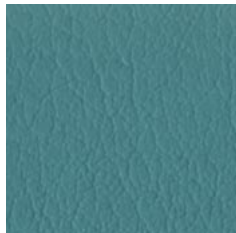
AGV411 Lavender



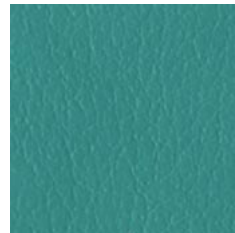
AGV412 Orchid



AGV413 Cornflower



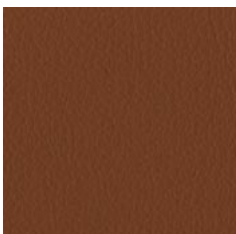
AGV415 Lupine



AGV416 Turquoise



AGV420 Kiwi



AGV424 Pretzel

ALMOST[®] Buffed/Glove

Content:
100% Nylon

Grade: 4

Width:
54"

Weight:
10.50 oz / LY

Country Of Origin:
USA

Pattern Direction:
Up the Roll

Abrasion:
250,000 double rubs, Wyzenbeek*

Cleaning Code:
WSB

Bleach Cleanable:
10:1 Water:Bleach

Hydrolysis:
10 Weeks

Breaking Strength:
ASTM-D5034-90

AATC-8 / Crocking:
Pass

NFPA 260 (UFAC):
Pass

Cal 117 2013:
Pass

ASTM E-84: Class A, Adhered
Additional backing required,
contact customer service for
pricing.

Environmental Benefits:
PFAS Free, PVC Free,
Formaldehyde Free, Poly
Fluorinated Compounds Free,
Antimicrobials Antibacterials
Free, Flame Retardant Free,
Phthalate Free

Certificates & Standards:
Healthier Hospitals Compliant

Flammability Notes:
FR Free

ACT Symbols:



Notes:
Additional backing may be
added to meet flame code ASTM
E-84: Class A, Adhered for Panel
and Wallcoverings applications.
Contact Customer Service for
pricing.

**Abrasion test results exceeding ACT
Performance Guidelines are not an
indicator of product lifespan. Multiple
factors affect fabric durability and
appearance retention.*

***ACT[®] Registered Certification Marks*



ALMOST[®] Calf



ACF802 Light Bisque



ACF803 Bisque



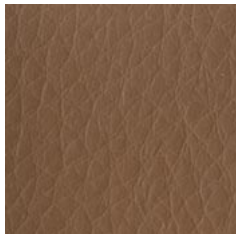
ACF805 Straw



ACF806 Khaki



ACF807 Sahara



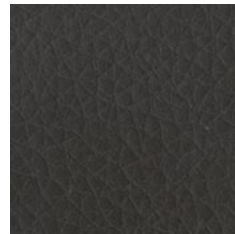
ACF808 Ginger



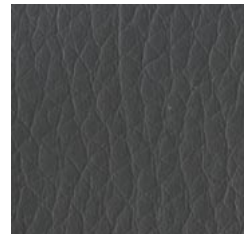
ACF809 Spice



ACF813 Smoke



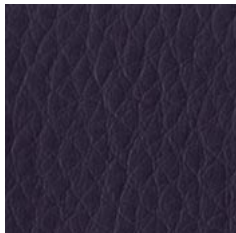
ACF815 Nutbrown



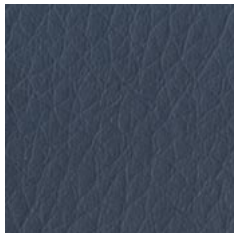
ACF816 Lead



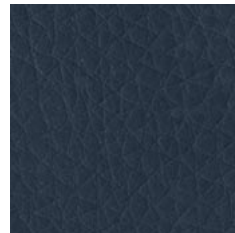
ACF818 Merlot



ACF819 Amethyst



ACF820 Iris



ACF822 Columbine



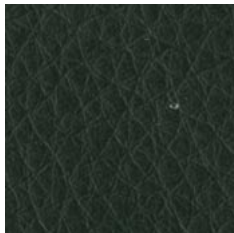
ACF823 Midnight



ACF824 Blue Spruce



ACF825 Loden



ACF828 Fern Green



ACF829 Seaweed



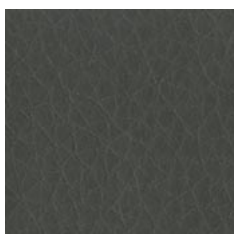
ACF830 Carbon



ACF833 Buckskin



ACF840 Cinnamon



ACF848 Portabella

ALMOST® Calf

Content:
100% Nylon

Grade: 4

Width:
54"

Weight:
10.50 oz / LY

Country Of Origin:
USA

Pattern Direction:
Up the Roll

Abrasion:
250,000 double rubs, Wyzenbeek*

Cleaning Code:
WSB

Bleach Cleanable:
10:1 Water:Bleach

Hydrolysis:
10 Weeks

Breaking Strength:
ASTM-D5034-90

AATC-8 / Crocking:
Pass

NFPA 260 (UFAC):
Pass

Cal 117 2013:
Pass

ASTM E-84: Class A, Adhered
Additional backing required,
contact customer service for
pricing.

Environmental Benefits:
PFAS Free, PVC Free,
Formaldehyde Free, Poly
Fluorinated Compounds Free,
Flame Retardant Free, Phthalate
Free, Antimicrobial / Antibacterial
Free

Certificates & Standards:
Healthier Hospitals Compliant

Flammability Notes:
FR Free

ACT Symbols:



Notes:

Additional backing may be added to meet flame code ASTM E-84: Class A, Adhered for Panel and Wallcoverings applications. Contact Customer Service for pricing.

**Abrasion test results exceeding ACT Performance Guidelines are not an indicator of product lifespan. Multiple factors affect fabric durability and appearance retention.*

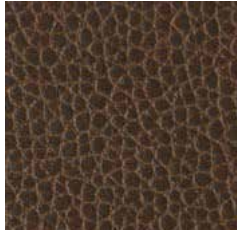
***ACT® Registered Certification Marks*



ALMOST[®] Classic



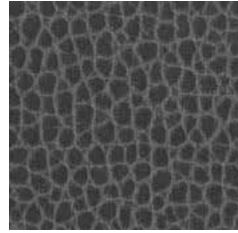
ACL320 Saddle



ACL321 Coffee



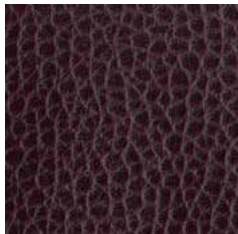
ACL323 Sapphire



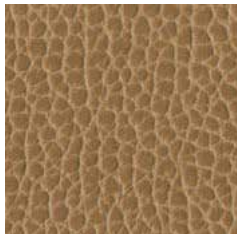
ACL325 Slate



ACL326 Black Granite



ACL327 Black Cherry



ACL328 Caramel

ALMOST[®] Matte



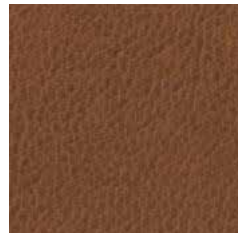
AMT767 Statue



AMT769 Warm Taupe



AMT770 Dove



AMT771 Toasted

ALMOST® Classic / Matte

Content:
100% Nylon

Grade: 4

Width:
54"

Weight:
10.50 oz / LY

Country Of Origin:
USA

Pattern Direction:
Up the Roll

Abrasion:
250,000 double rubs, Wyzenbeek*

Cleaning Code:
WSB

Bleach Cleanable:
10:1 Water:Bleach

Hydrolysis:
10 Weeks

Breaking Strength:
ASTM-D5034-90

AATC-8 / Crocking:
Pass

NFPA 260 (UFAC):
Pass

Cal 117 2013:
Pass

ASTM E-84: Class A, Adhered
Additional backing required,
contact customer service for
pricing.

Environmental Benefits:
PFAS Free, PVC Free,
Formaldehyde Free, Poly
Fluorinated Compounds Free,
Antimicrobials Antibacterials
Free, Flame Retardant Free,
Phthalate Free

Certificates & Standards:
Healthier Hospitals Compliant

Flammability Notes:
FR Free

ACT Symbols:



Notes:

Additional backing may be added to meet flame code ASTM E-84: Class A, Adhered for Panel and Wallcoverings applications. Contact Customer Service for pricing.

**Abrasion test results exceeding ACT Performance Guidelines are not an indicator of product lifespan. Multiple factors affect fabric durability and appearance retention.*

***ACT® Registered Certification Marks*



ALMOST[®] Nappa



ANA500 Sunflower



ANA501 Cappuccino



ANA502 Fawn



ANA504 Tangerine



ANA505 Cardinal



ANA509 Concord



ANA511 Bluebell



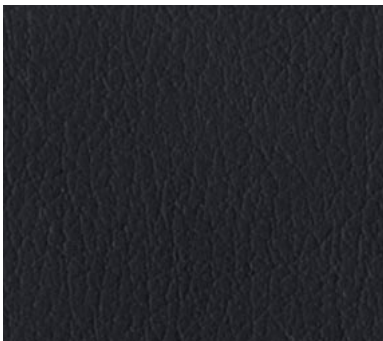
ANA512 French Blue



ANA514 Lagoon



ANA517 Sage



ANA520 Black Ink

ALMOST[®] Nappa

Content:
100% Nylon

Grade: 4

Width:
54"

Weight:
10.50 oz / LY

Country Of Origin:
USA

Pattern Direction:
Up the Roll

Abrasion:
250,000 double rubs, Wyzenbeek*

Cleaning Code:
WSB

Bleach Cleanable:
10:1 Water:Bleach

Hydrolysis:
10 Weeks

Breaking Strength:
ASTM-D5034-90

AATC-8 / Crocking:
Pass

NFPA 260 (UFAC):
Pass

Cal 117 2013:
Pass

ASTM E-84: Class A, Adhered
Additional backing required,
contact customer service for
pricing.

Environmental Benefits:
PFAS Free, PVC Free,
Formaldehyde Free, Poly
Fluorinated Compounds Free,
Antimicrobials Antibacterials
Free, Flame Retardant Free,
Phthalate Free

Certificates & Standards:
Healthier Hospitals Compliant

Flammability Notes:
FR Free

ACT Symbols:


Notes:
Additional backing may be
added to meet flame code ASTM
E-84: Class A, Adhered for Panel
and Wallcoverings applications.
Contact Customer Service for
pricing.

**Abrasion test results exceeding ACT
Performance Guidelines are not an
indicator of product lifespan. Multiple
factors affect fabric durability and
appearance retention.*

***ACT[®] Registered Certification Marks*



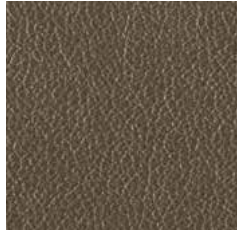
ALMOST[®] Pearl



APL704 Fire



APL720 Black Pearl



APL722 Pewter



APL723 Alloy

ALMOST[®] Vogue



AGGV301 Pearl Gelato



AGGV302 Mercury



AGGV306 Tan



AGGV310 Quarry

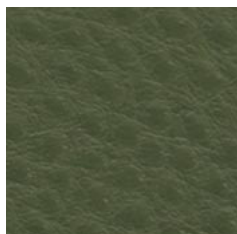
ALMOST[®] Ostrich



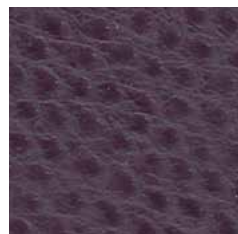
AOS_830 Winter



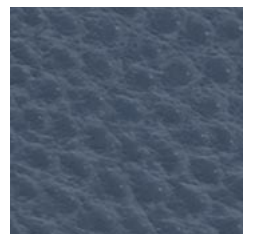
AOS_833 Sand Dune



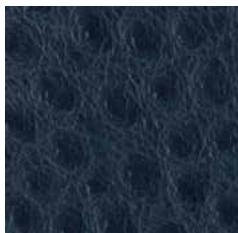
AOS_854 Green Garden



AOS_856 Grape



AOS_857 Blue Bird



AOS823 Baltic



AOS824 Aubergine



AOS826 Alfalfa

ALMOST® Pearl / Vogue / Ostrich

Content:
100% Nylon

Pearl Grade: 4
Vogue Grade: 5
Ostrich Grade: 4

Width:
54"

Weight:
10.50 oz / LY

Country Of Origin:
USA

Pattern Direction:
Up the Roll

Abrasion:
250,000 double rubs, Wyzenbeek*

Cleaning Code:
WSB

Bleach Cleanable:
10:1 Water:Bleach

Hydrolysis:
10 Weeks

Breaking Strength:
ASTM-D5034-90

AATC-8 / Crocking:
Pass

NFPA 260 (UFAC):
Pass

Cal 117 2013:
Pass

ASTM E-84: Class A, Adhered
Additional backing required,
contact customer service for
pricing.

Environmental Benefits:
PFS Free, PVC Free, Formaldehyde
Free, Poly Fluorinated
Compounds Free, Antimicrobials
Antibacterials Free, Flame
Retardant Free, Phthalate Free

Certificates & Standards:
Healthier Hospitals Compliant

Flammability Notes:
FR Free

ACT Symbols:

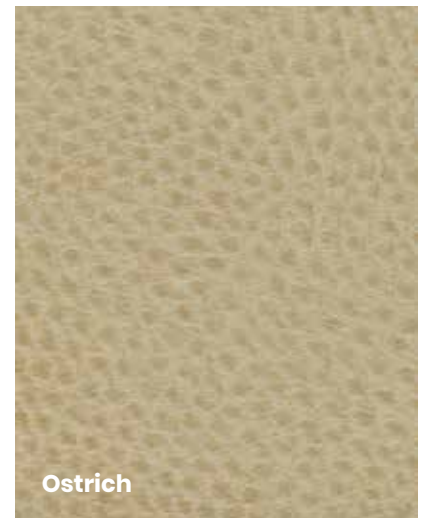


Notes:

Additional backing may be added to meet flame code ASTM E-84: Class A, Adhered for Panel and Wallcoverings applications. Contact Customer Service for pricing.

**Abrasion test results exceeding ACT Performance Guidelines are not an indicator of product lifespan. Multiple factors affect fabric durability and appearance retention.*

***ACT® Registered Certification Marks*



ALMOST® **Suede**



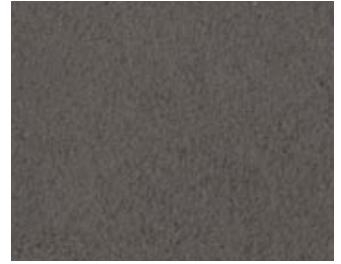
AMSI003 Latte



AMSI004 Foggy Bay



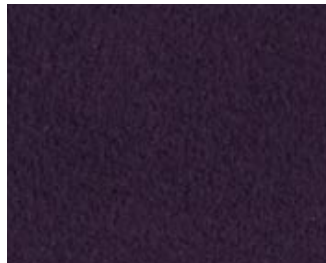
AMSI026 Doe



AMSI033 Seal



AMSI036 Grey Whale



AMSI072 Raisin



AMSI080 Battleship Grey



AMSI105 Blonde



AMSI009 Mink

ALMOST® Suede

CONTENT: 100% Nylon

WIDTH: 54"

APPLICATION: Heavy Duty Upholstery

DURABILITY: 250,000+ Double Rubs - Wyzenbeek

FLAMMABILITY CLASS: 1. California Tech. Bulletin 117 Sec. E Class 1 2. UFAC Class 1
3. NFPA-260 Class 1

CLEANING CODE: W / S

(We recommend using EPA registered disinfectants as opposed to homemade dilutions whenever possible. Bleach and Water solutions must be diluted 1/10 making sure to rinse after 10 minutes.)



ALMOST® **Textura**



ATX600 Antique White



ATX602 Parchment



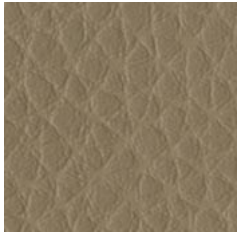
ATX603 Sandstone



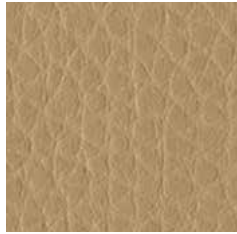
ATX604 Driftwood



ATX605 Dune



ATX606 Jute



ATX607 Buttercreme



ATX608 Pecan



ATX609 Russet



ATX610 Havana



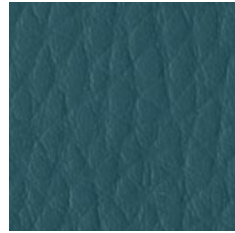
ATX613 Laurel



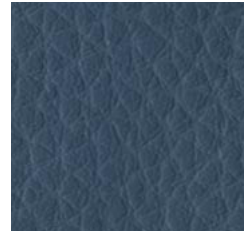
ATX614 Boxwood



ATX617 Wild Plum



ATX621 Marine



ATX622 Cape Blue



ATX623 Saxe Blue



ATX626 Onyx



ATX627 Smoke Stone



ATX629 Artichoke



ATX630 Paprika



ATX631 Hazel



ATX634 Steel

ALMOST® Textura

Content:
100% Nylon

Grade: 4

Width:
54"

Weight:
10.50 oz / LY

Country Of Origin:
USA

Pattern Direction:
Up the Roll

Abrasion:
250,000 double rubs, Wyzenbeek*

Cleaning Code:
WSB

Bleach Cleanable:
10:1 Water:Bleach

Hydrolysis:
10 Weeks

Breaking Strength:
ASTM-D5034-90

AATC-8 / Crocking:
Pass

NFPA 260 (UFAC):
Pass

Cal 117 2013:
Pass

ASTM E-84: Class A, Adhered
Additional backing required,
contact customer service for
pricing.

Environmental Benefits:
PFAS Free, PVC Free,
Formaldehyde Free, Poly
Fluorinated Compounds Free,
Flame Retardant Free, Phthalate
Free, Antimicrobial / Antibacterial
Free

Certificates & Standards:
Healthier Hospitals Compliant

Flammability Notes:
FR Free

ACT Symbols:



Notes:
Additional backing may be
added to meet flame code ASTM
E-84: Class A, Adhered for Panel
and Wallcoverings applications.
Contact Customer Service for
pricing.

**Abrasion test results exceeding ACT
Performance Guidelines are not an
indicator of product lifespan. Multiple
factors affect fabric durability and
appearance retention.*

***ACT® Registered Certification Marks*



Boho



BOHO-001 Tawny



BOHO-002 Indigo Jeans



BOHO-004 Blue Note



BOHO-006 Night Owl



BOHO-007 Orange Soda



BOHO-008 Kale



BOHO-009 Roast Coffee



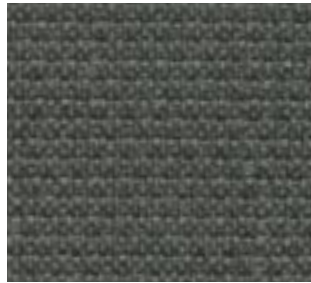
BOHO-012 Grass



BOHO-014 Cotton



BOHO-101 Licorice



BOHO-102 Monterey Grey



BOHO-103 Purple Haze



BOHO-104 Tree Hugger



BOHO-105 Marigold



BOHO-106 Sprout



BOHO-107 Poolside



BOHO-108 Raspberry Beret

Boho

Content:

100% PVC (Phthalate Free)

Grade: 1

Standard Finish:

Resilience TX

Width:

54"

Weight:

28.00 oz / LY

Country Of Origin:

Taiwan

Standard Backing:

Brushed Polyester Knit

Pattern Direction:

Up the Roll

Abrasion:

250,000 double rubs, Wyzenbeek*

Cleaning Code:

WS

Bleach Cleanable:

10:1 Water:Bleach

Antimicrobial/Antibacterial:

Pass

Breaking Strength:

ASTM D751 06

Adhesion Coating:

Pass

Cold Crack:

-20° F CFFA-6a-2007

AATC-8 / Crocking:

Pass

NFPA 260 (UFAC):

Pass

Cal 117 2013:

Pass

ASTM G21-13 Mildew Resistance:

Pass

Environmental Benefits:

PFAS Free, PVC Free, Phthalate Free, lead Free, BPA Free, TRIC Free, Formaldehyde Free

Certificates & Standards:

HPD, Reach Compliant, RoHS Compliant

Flammability Notes:

FR Free

ACT Symbols:

Notes:

Additional backing may be added to meet flame code ASTM E84 for Panel and Wallcoverings applications. Contact Customer Service for pricing.

**Abrasion test results exceeding ACT Performance Guidelines are not an indicator of product lifespan. Multiple factors affect fabric durability and appearance retention.*

***ACT® Registered Certification Marks*



Ginseng



GN06 Gourd



GN08 Quartz



GN10 Sparrow



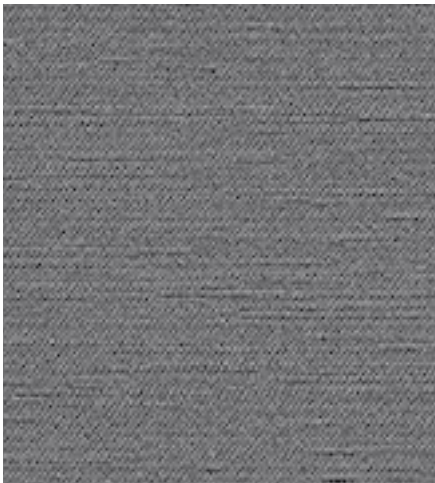
GN11 Ming



GN13 Rice



GN21 Dragon



GN22 Cave



GN23 Pacific



GN24 Lark

Ginseng

CONTENT:	100% PVC (Phthalate Free)
FINISH:	Resilience ^{SR} / Stain Protection / Anti-Microbial / Anti-Bacterial
BACKING:	100% Brushed Polyester Knit
WIDTH: 54"	REPEAT: None
PATTERN DIRECTION:	Shown up the roll
APPLICATION:	Heavy Duty Upholstery
DURABILITY:	250,000+ Double Rubs ASTM D 4157-10 Wyzenbeek
FLAMMABILITY CLASS:	1. California Technical Bulletin 117 : 2013. 2. UFAC Class 1 3. MVSS 302 4. NFPA 260 5. IMO 2010 FTP Code - Part 8 (3.1 & 3.2)
CLEANING CODE:	W / B (Bleach Cleanable 1:10) Rinse Well
ECO-FEATURES:	21P Phthalate Free (includes all Phthalates listed in CAL PROP 65 and CPSIA) Lead Free / BPA Free / Tris Free / Formaldehyde Free Does not contain Conflict Minerals



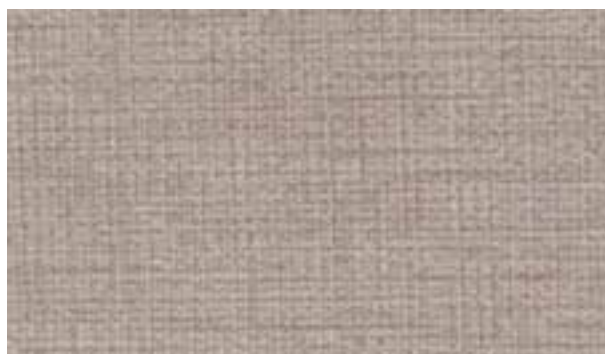
Harmony



Porcelain HA-01



Plaza HA-02



Calm Taupe HA-03



Deep Pool HA-09



Sea Glass HA-10



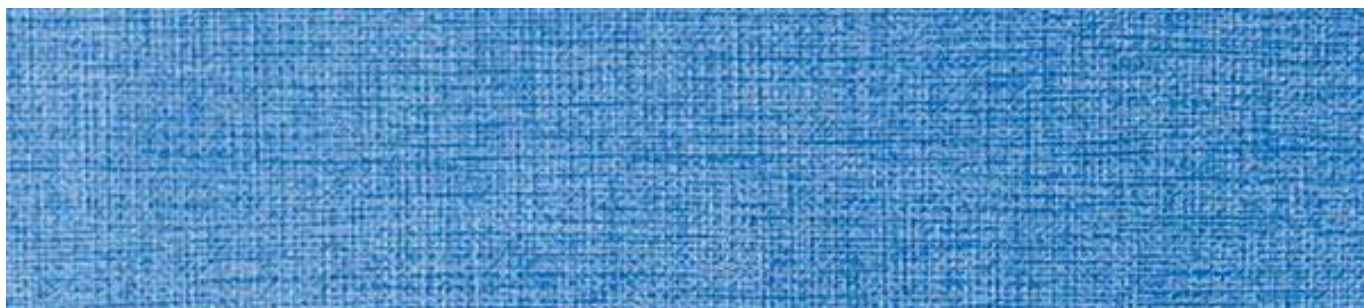
Brilliant Sky HA-12



Dark Navy HA-13

Harmony

CONTENT:	62% PU; 19% Rayon; 19% Polyester
SURFACE COMPOSITION:	100% Polycarbonate
BACKING COMPOSITION:	50% Rayon, 50% Polyester
FINISH:	Sta-Kleen®
WIDTH: 54"	REPEAT: N/A
PATTERN DIRECTION:	N/A
APPLICATION:	Heavy Duty Upholstery
HYDROLYSIS RESISTANCE:	15 Weeks
UV STABILITY:	Light Fastness 1000 Hours
CROCKING RESISTANCE:	Wet 5; Dry 5
BLUE DYE RESISTANCE:	Wet 4-5; Dry 4-5
DURABILITY:	500,000+ Double Rubs - Wyzenbeek
WEIGHT:	17.7 oz./yd +/-10%
FLAMMABILITY CLASS:	IMO A.652(16)8.2 / CA TB117-2013 / NFPA 260 U.F.A.C. Class 1 / FMVSS/CMVSS #302
CLEANING CODE:	W / S /BC 4:1 Water to Bleach Solution
ECO FEATURES:	<ol style="list-style-type: none">1. No PVC, plasticizers, phthalates, stabilizers, heavy metals, or Bisphenol A2. No chemical flame retardants3. No persistent organic pollutants4. RoHS, REACH and Prop65 compliant5. No toxic by-products6. No anti-microbial additives



Writer's Block Tolstoy II



WBTY109 Flintstone



WBTY101 Asphalt



WBTY102 Boardwalk



WBTY104 Chimney



WBTY105 Cordovan



WBTY107 Earth



WBTY108 Feather



WBTY110 Garland



WBTY111 Harbor



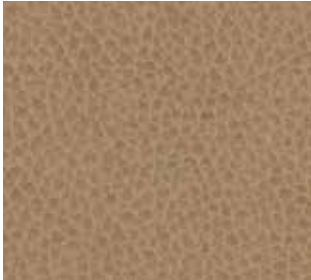
WBTY114 Kalahari



WBTY118 Passive



WBTY120 Poseidon



WBTY121 Quarry



WBTY123 Redwood



WBTY124 Retreat



WBTY125 Rye



WBTY128 Whiskey



The super stain resistant polyurethane.

Spills and splatters won't matter with Writer's Block performance polyurethanes. The repel-and-release stain inhibiting system protects from the toughest stains including ink, indigo denim dye-transfer, or food and drink. Beyond clean, Writer's Block faux leathers are engineered to outperform, with healthcare grade hydrolysis resistance, and bleach cleanability.



Ink and Graffiti Resistant



Repel and Release Technology



Denim Dye Transfer Protection



Ready for Bleach



PVC-Free

GENERAL SPECIFICATIONS

CONTENT:	100% Polyurethane (Polycarbonate)
WIDTH:	54"
REPEAT:	None
PATTERN DIRECTION:	Up The Roll
BACKING:	100% Polyester
FINISH:	Writer's Block™
WEIGHT:	25.4 oz. per linear yard
APPLICATION:	Heavy Duty Upholstery

KEY PERFORMANCE SPECIFICATIONS

ABRASION RESISTANCE :	250,000+ Double Rubs*
HYDROLYSIS:	10 Weeks
STAIN RESISTANCE:	with Writer's Block
LIGHT FASTNESS:	200 Hours
CLEANING CODE:	W / S / B
BLEACH CLEANABLE:	10% Dilution
CLEANING CODE:	S / W / B
FLAMMABILITY CLASS:**	California TB 117-2013 UFAC Class 1 NFPA 260

ACT Symbols:



**Abrasion test results exceeding ACT Performance Guidelines are not an indicator of product lifespan. Multiple factors affect fabric durability and appearance retention.*

***ACT® Registered Certification Marks*

CLEANING INSTRUCTIONS

For everyday maintenance, simply clean with a damp cloth or mild soap and water. For soiled areas wipe with non-abrasive general purpose cleaner. Difficult stains can be cleaned using 70% diluted rubbing alcohol and water. It is recommended to wipe the material surface with fresh water after application of cleaner or disinfectant.

ENGINEERED FOR DEMANDING ENVIRONMENTS

Hospitality, Healthcare, Contract, Education, Residential Upholstery

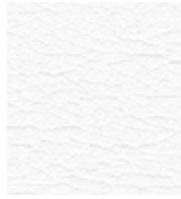
REDUCED ENVIRONMENTAL IMPACT

This product does not pose any exposure risks associated with the chemicals in Prop 65
Phthalate Free
Lead / Heavy Metal Free
BPA Free / Tris Free / Formaldehyde Free
Does not contain Flame Retardant Chemicals
HPD Available
PFAS Free Stain Resistance

Uf Select Harbor



HB03 Cobblestone



BS12 Vista



BS01 Ranch



BS03 Canton



BS09 Agave



HB01 Snowball



HB02 Creamy Grey



BS04 Desert Park



BS11 Torrey Pine



BS13 Silver Strand



BS02 Trail



HB06 Almond Shell



HB10 Tea Leaf

Uf Select Bayside



BS14 Blackbird



HB05 Charred



BS06 Cliff



BS16 Catalina



BS10 Sea Cave



BS07 Del Mar



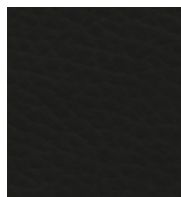
BS05 Carmel



HB07 Butter Rum



HB09 Blue Hill



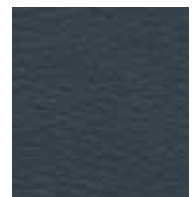
BS15 Camino



HB04 Beachwood



BS17 Coronado



BS08 Naval



HB12 Whale Watch



HB08 Apple Cider



BS18 Cedar Creek



HB11 Bristol

Collection	Composition	Weight / Thickness	Abrasion
Harbor	Polycarbonate Blended Surface 65% Polyester, 35% Cotton Backing	12.53 oz. per sq. yard Approx. 0.95 mm	ASTM D4157 / 200,000 DR Wyzenbeek
Bayside	Polycarbonate Blended Surface 65% Polyester, 35% Cotton Backing	12.53 oz. per sq. yard Approx. 0.95 mm	ASTM D4157 / 200,000 DR Wyzenbeek
Width:	54"		
Hydrolysis:	10 Weeks ASTM D3690 SECT. 6.11 (Hydrolytic Stability) / ISO 1419 Method C (Accelerated Ageing)		
F/R Rating:	ASTM E84 (adhered) - Class A CA TB 117 - Pass FMVSS 302 & 95/28 ANNEX IV - Pass NFPA 260 - Class 1 UFAC - Class	Can be treated to meet FAR specifications. These fabrics, when treated and/or used with other compatible furniture components, have been shown to perform under the fire test conditions BS 5852 Source 0, 1 & 5 (Cig, Match and Crib 5), BS 7175, BS EN 1021 Part 1 & 2 (Cig & Match). (Bayside Only)	
Adhesion of Coating:	ASTM D751		
Tear Strength:	ASTM D2261		
Breaking Strength:	ASTM D5034		
Tensile Strength:	BS EN ISO 1421		
Crocking:	AATCC 8, Grade 4-5 Wet & Dry		
Light Fastness:	AATCC 16.3, 200 Hours, Grade 4 ISO 105 B02, Grade 6		

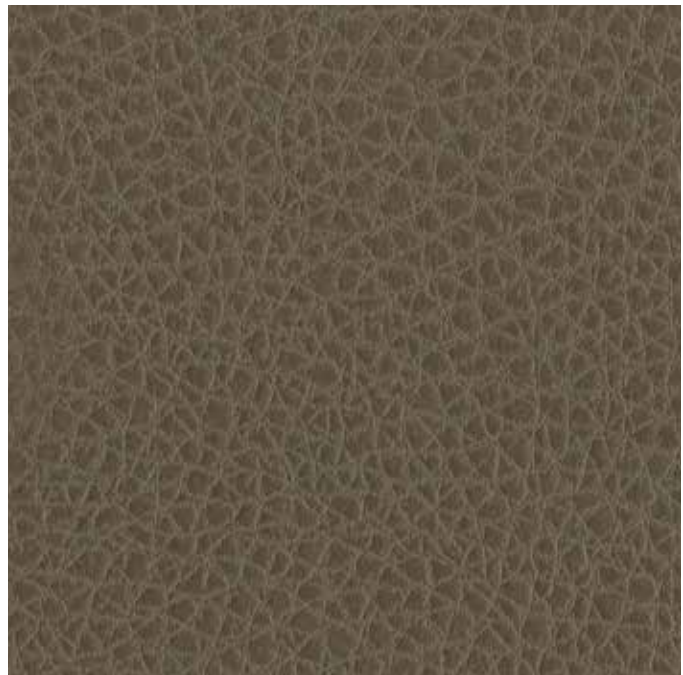
For more information on certifications and standards, sustainability, as well as cleaning and care instructions, please visit our website - www.paulbraytondesigns.com

For more information on certifications and standards, sustainability, as well as cleaning and care instructions, please visit our website - www.paulbraytondesigns.com

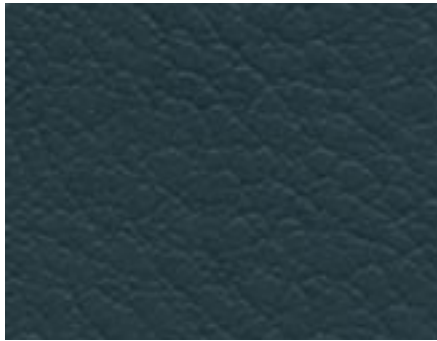
Uf Select Bayside



Uf Select Harbor



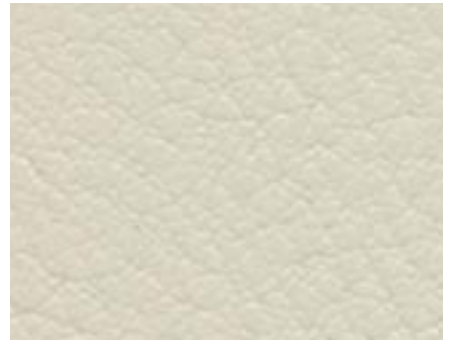
Viva



Deep Sea VIVA005



Cornucopia VIVA007



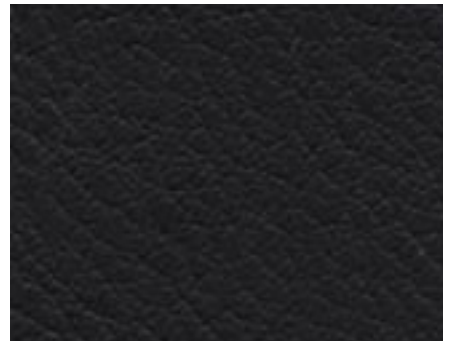
Limestone VIVA019



Cattail VIVA020



Newport VIVA023



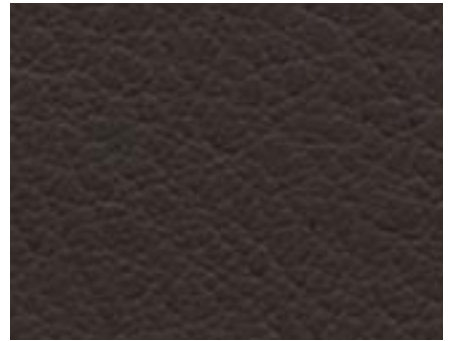
Knight VIVA026



Quarry VIVA033



Storm VIVA034



Sumatra VIVA036



Penny VIVA038

Viva

CONTENT: 100% Polyurethane

BACKING: 100% Polyester

WIDTH: 54" **REPEAT:** N/A

APPLICATION: Heavy Duty Upholstery

DURABILITY: 250,000+ Double Rubs - Wyzenbeek

FLAMMABILITY CLASS: California Tech. Bulletin 117 Section E; 2. UFAC Class 1; 3.BIFMA;
4. NFPA260; 5. IMO A.652(16)8.2

CLEANING CODE: W / B



Copenhagen Leather



COPEN01 Black



COPEN02 Slate



COPEN06 Dove



COPEN05 Cloud



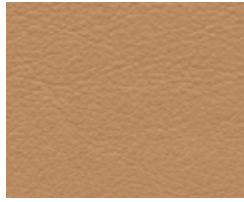
COPEN06 Winter



COPEN07 Off White



COPEN10 Shiitake



COPEN14 Wheat



COPEN16 Butterscotch



COPEN17 Spice



COPEN18 Cayenne



COPEN21 Oyster



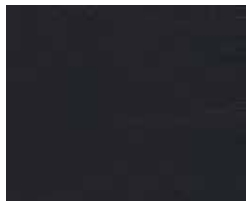
COPEN23 Cashmere



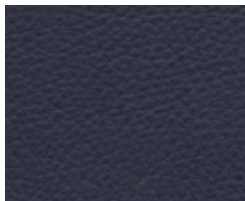
COPEN29 Sorrel Brown



COPEN30 Dark Chocolate



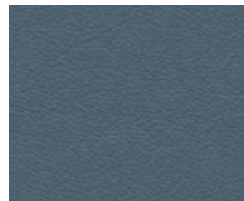
COPEN50 Blue Spruce



COPEN51 Ultramarine



COPEN52 Cobalt



COPEN53 Horizon



COPEN60 Pine Needles



COPEN65 Pumpkin



COPEN71 Umbria Red



COPEN72 Red Pepper



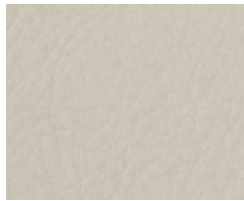
NEW COPEN81 Vintage



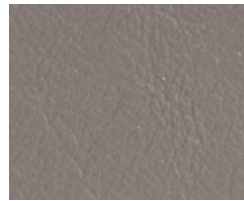
NEW COPEN82 Umber



NEW COPEN83 Foothills



NEW COPEN84 Sandcastle



NEW COPEN85 Greystone



NEW COPEN86 Cool Cloud



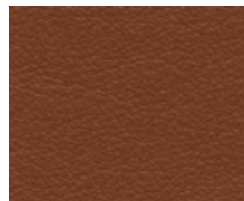
NEW COPEN87 Stingray



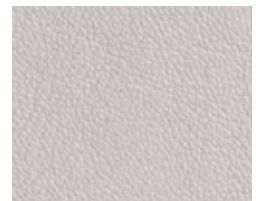
NEW COPEN88 Bedrock



NEW COPEN89 Truffle



NEW COPEN90 Subtle Spice



NEW COPEN91 Dreamy

Copenhagen Leather

CONTENT:	Full grain leather. Water-based dye. Semi-aniline finish.
BACKING:	None
HIDES: Average 50 sq. ft.	REPEAT: N/A
APPLICATION:	Heavy Duty Upholstery
DURABILITY:	250,000+ Double Rubs - Wyzenbeek
FLAMMABILITY CLASS:	California Home Furnishings Bulletin 117, Section E. U.S. Department of Commerce CS-101-53, Class 1. UFAC, Class 1. NFPA 260, Class 1.

LEATHER CARE: Semi-aniline leathers require very little care--general upkeep requires only an occasional wiping with a clean cloth. Occasionally you may gently wipe with a clean, damp cloth to remove accumulated soil, then allow it to air dry. Should a spill occur, immediately blot with a clean, dry, cloth. If soil remains, a solution of lukewarm water and a mild soap (Ivory) may be used. Dampen a clean white cloth with a small amount of soap and gently wipe the affected area using a circular motion. Never apply the solution directly to the leather. Rinse completely with a clean cloth to ensure all cleaner is removed. To avoid damage, do not rub for an extended period. Never use oils, saddle soaps, harsh cleaners or cleaners containing abrasives on semi-aniline leather. Professional cleaning: For stubborn stains or deep cleaning, consider consulting a professional leather cleaner.



WWW.PAULBRAYTONDESIGNS.COM